

Worthington V2A4 Parts

Stark Industries has a large assortment of new Worthington V2A4 compressor parts. Everything from complete gasket kits, pistons, rings, bearings, valves, cylinders, coolers, among others. Take a look at the list on page 2 for all the parts we have in stock. Do note that there are a few items that are not listed or do not have an exact quantity, please contact us with any questions. For reference, a complete parts breakdown is included at the end of this document.



6511 Mapleridge St, Houston, TX 77081
 (713)-592-0377

| Part # | Description | Qty. |
|-----------|--------------------------------------|------|
| AFT-0062 | Aftercooler, 4th Stage | |
| BAF-0366 | Baffle, Separator | 134 |
| BAL-0009 | Ball, 5/16", SS | 2564 |
| BAL-0050 | Ball, 1/4", SS | 147 |
| BOD-0147 | Body, Initial Unloader | |
| BOD-0240 | Body, Oil Pump Housing | 1 |
| BOD-0241 | Body, 2nd Stage Valves | 1 |
| BOD-0368 | Body, 1552 Valve | 6 |
| BRK-2814 | Bracket, Oil Filter | 53 |
| BUS-0159 | Bushing, Wrist Pin | 28 |
| CAP-0005 | Cap, Suction Plug | 7 |
| CAP-0025 | Cap, Oil Pressure Adjustment Screw | 3 |
| CAP-0674 | Cap, Oil Pressure | 14 |
| CNE-14585 | Bearing, Conical Roller, Crankshaft | |
| COV-0974 | Cover, Unloader Valve | 24 |
| CYL-0213 | Cylinder, 1st Stage | |
| DIS-0107 | Disc, Separator | 643 |
| DIS-0118 | Disc, Valve | |
| FLR-0225 | Filter, Air | 1 |
| GDE-0091 | Guide, Valve, High Stage | 460 |
| GER-0083 | Gear, Oil Pump, Bronze | |
| GER-0084A | Gear, Oil Pump, Steel | |
| GKT-0582 | Gasket, Suction Valve Cap, Copper | 395 |
| GKT-0587 | Gasket, Valve Studs, Copper | 523 |
| GKT-0588 | Gasket, Copper | 4 |
| GKT-0593 | Gasket, Guard to Plate Screw, Copper | 86 |
| GKT-0602 | Gasket, Jam Nut, Copper | 830 |
| GKT-0614 | Gasket, Plug to Guide, Copper | 200 |
| GKT-0628 | Gasket, Head to Cylinder, Copper | 76 |
| GKT-0865 | Gasket, Plug, Oil Stick | 200 |
| GKT-0894 | Gasket, Flange, 2nd Stage Valve | 500 |
| GKT-0928 | Gasket, Flange, 1st Stage Cylinder | 490 |
| GKT-1197 | Gasket, Oil Stick | 402 |
| GKT-2040 | Gasket, Valve Plate, 1st Stage | 455 |

| Part # | Description | Qty. |
|-----------|------------------------------------|------|
| GKT-2051 | Gasket, Cylinder to Cylinder | 500 |
| GKT-2052 | Gasket, Head to Cylinder | 450 |
| GKT-2488 | Gasket, Crankcase Side Covers | 85 |
| GKT-2490 | Gasket, Body to Cylinder | 304 |
| GKT-2491 | Gasket, Seat to Cylinder | 2 |
| GKT-2492 | Gasket, Oil Pump (Body to Housing) | 500 |
| GKT-2553 | Gasket, Cylinder to Cylinder | 511 |
| GKT-2649 | Gasket, Plate | 400 |
| GKT-2653 | Gasket, Cover, Unloader Body | 227 |
| GKT-2742 | Gasket, Piston Screw | 925 |
| GKT-2794 | Gasket, Head to Suction Valve | 447 |
| GKT-2807 | Gasket, Cylinder to Crankcase | 650 |
| GRD-0593 | Guard, Valve, Suction | 18 |
| GRD-0594 | Guard, Valve, Discharge | 18 |
| HD-0633 | Head, 1st Stage | 3 |
| HD-0748B | Head, 3rd Stage | 7 |
| HUB-0193 | Hub, Fan, Non Tapered | |
| HUB-0209 | Hub, Fan, Tapered | 3 |
| INS-0148 | Insert, Cylinder | 21 |
| INS-0173 | Insert, Cylinder | 29 |
| INS-0199 | Insert, Cylinder | 95 |
| INT-0114 | Intercooler, 3rd Stage | 2 |
| INT-0138 | Intercooler, 1st Stage | 4 |
| INT-0139 | Intercooler, 2nd Stage | 3 |
| KEY-0034 | Key, Drive | 35 |
| KIT-0682 | Kit, Rings, 1st and 2nd Stages | |
| KIT-1007 | Kit, 2nd Stage Valve | 42 |
| KIT-1230 | Kit, Discharge Valve | 1 |
| KIT-1292 | Kit, Separator | 36 |
| KIT-1322 | Kit, 3rd Stage Rings | 5 |
| KIT-1373A | Kit, SAB Gasket | |
| KIT-1431 | Kit, High Stage Rings | 1 |
| KIT-2412 | Kit, Spin-on Oil Filter | 30 |
| KOS-0144 | Oil Seal, Crankshaft | 4 |

6511 Mapleridge St, Houston, TX 77081
 (713)-592-0377

| Part # | Description | Qty. |
|---------------|-------------------------------|-------------|
| NUT-0693 | Nut, Jam, Oil Regulator | |
| NUT-0811 | Nut, Sheave | 10 |
| NUT-1240 | Nut, Acorn, 2nd Stage | 191 |
| NUT-1346 | Nut, Connecting Rod | 213 |
| PAD-0747 | Pad, Separator | 189 |
| PIN-0099 | Wristpin, 2nd Stage | |
| PLT-3199 | Plate, Valve Upper | 6 |
| PLT-3200 | Plate, 2nd Stage Valve | 8 |
| PLU-0655 | Plug, High Pressure Separator | |
| PLU-0681 | Plug, Suction Valve | 8 |
| POP-0002 | Poppet, Oil Pressure | 15 |
| PST-0381A | Piston, 3rd Stage | 8 |
| PST-0381B | Piston, 3rd Stage | |
| PST-0382A | Piston, Guide, Aluminum | 1 |
| PST-0382B | Piston, Guide, Aluminum | |
| PST-0418 | Piston, 3rd Stage | |
| PST-0477B | Piston Shaft (with Grooves) | 27 |
| PST-0624 | Piston, Unloader | 2 |
| RNG-0002 | Ring, Piston | 164 |
| RNG-0046 | Ring, Compression, 2nd Stage | |
| RNG-0270 | Ring, Compression, 1st Stage | |
| RNG-0271 | Ring, Compression, 3rd Stage | |
| RNG-1275 | Ring, V2A4 | 2 |
| RNG-1323 | O-Ring, Oil Suction Tube | 388 |
| RNG-1326 | Ring, Packing | 15 |
| RNG-1377 | O-ring, Viton | 115 |
| RNG-1441 | Ring, Contracting, 3rd Stage | |
| RNG-1453 | Ring, Oil, 2nd Stage | |
| RNG-1457 | Ring, Backup, Teflon | 39 |
| RNG-1652 | O-Ring | 250 |
| RNG-1653 | Ring, Valve Seat (1552) | 43 |
| RNG-1654 | Ring, Oil, 1st Stage | 29 |
| RNG-1655 | O-Ring | 180 |
| RNG-1657 | Ring, Oil, 3rd Stage | |

| Part # | Description | Qty. |
|-----------|---|------|
| RNG-1658 | Rings, 1st Stage | |
| RNG-1659 | Rings, 2nd Stage | |
| RNG-1690 | Ring, Slipper Seal | 28 |
| RNG-1692 | Rings, 4th Stage | 3 |
| RNG-1695 | O-Ring | 49 |
| RNG-1878 | O-Ring | 162 |
| RNG-2040 | O-Ring | 365 |
| ROD-0158A | Rod, Connecting | |
| ROD-0580 | Piston, High Pressure | 22 |
| ROD-0885 | Rod, Connecting (Assembly) | |
| SCR-1276 | Screw, Allen, Valve Body to Cylinder, 2nd Stage | |
| SCR-1670 | Screw, Valve Guard, 2nd Stage | 211 |
| SCR-1713 | Screw, Piston, High Pressure | 21 |
| SCR-1820 | Screw, Adjustment, Oil Pressure | 27 |
| SCR-1913 | Screw, Piston, 3rd Stage | 89 |
| SCR-1937 | Screw, Valve Guard | 87 |
| SCR-2111 | Screw, Nylok | 32 |
| SEL-0094 | Seal, Oil | 2 |
| SEP-0083 | Separator | |
| SET-0176 | Seat, Suction, 2nd Stage | 19 |
| SHE-0486 | Sheave | 65 |
| SHF-0259 | Shaft, Gear Driven | |
| SLV-0292 | Sleeve, High Pressure | |
| SPC-0237 | Spacer, Ring | 17 |
| SPC-0321 | Spacer, Separator | 1591 |
| SPG-0217 | Spring, Wristpin Lock Ring | 349 |
| SPG-0420 | Spring, Valve, High Pressure | 142 |
| SPG-0548 | Spring, Valve (1552B) | 816 |
| SPG-0550 | Spring, Valve (1551, 1559) | 863 |
| SPG-0559 | Spring, Oil Pressure Regulator | 915 |
| SRE-0118 | Screen, Separator | 49 |
| STR-0008 | Strip, Valve | 10 |
| STR-0015 | Strip, Valve, 2nd Stage | 9 |
| STR-0017 | Strip, Valve, 1st Stage | 6 |

6511 Mapleridge St, Houston, TX 77081
(713)-592-0377

| Part # | Description | Qty. |
|-----------|-----------------------------------|------|
| STU-0964 | Stud, Valve Plate | 145 |
| UNL-TIPS | Tips, Unloader Pistons | 45 |
| VAL-1363 | Valve, Relief, 3rd Stage | 1 |
| VAL-1551 | Valve, Back Pressure, 4th | 90 |
| VAL-1552B | Valve, Check | 81 |
| VAL-1559 | Valve, Back Pressure, 3rd | 89 |
| WAS-0027 | Washer, Valve Guard Screw, Copper | 2663 |

Parts List



Air-Cooled Reciprocating Compressor Type-H

Model No.

SAB
SABC
SBB

Worthington Compressors, Inc.
Holyoke, Massachusetts 01040

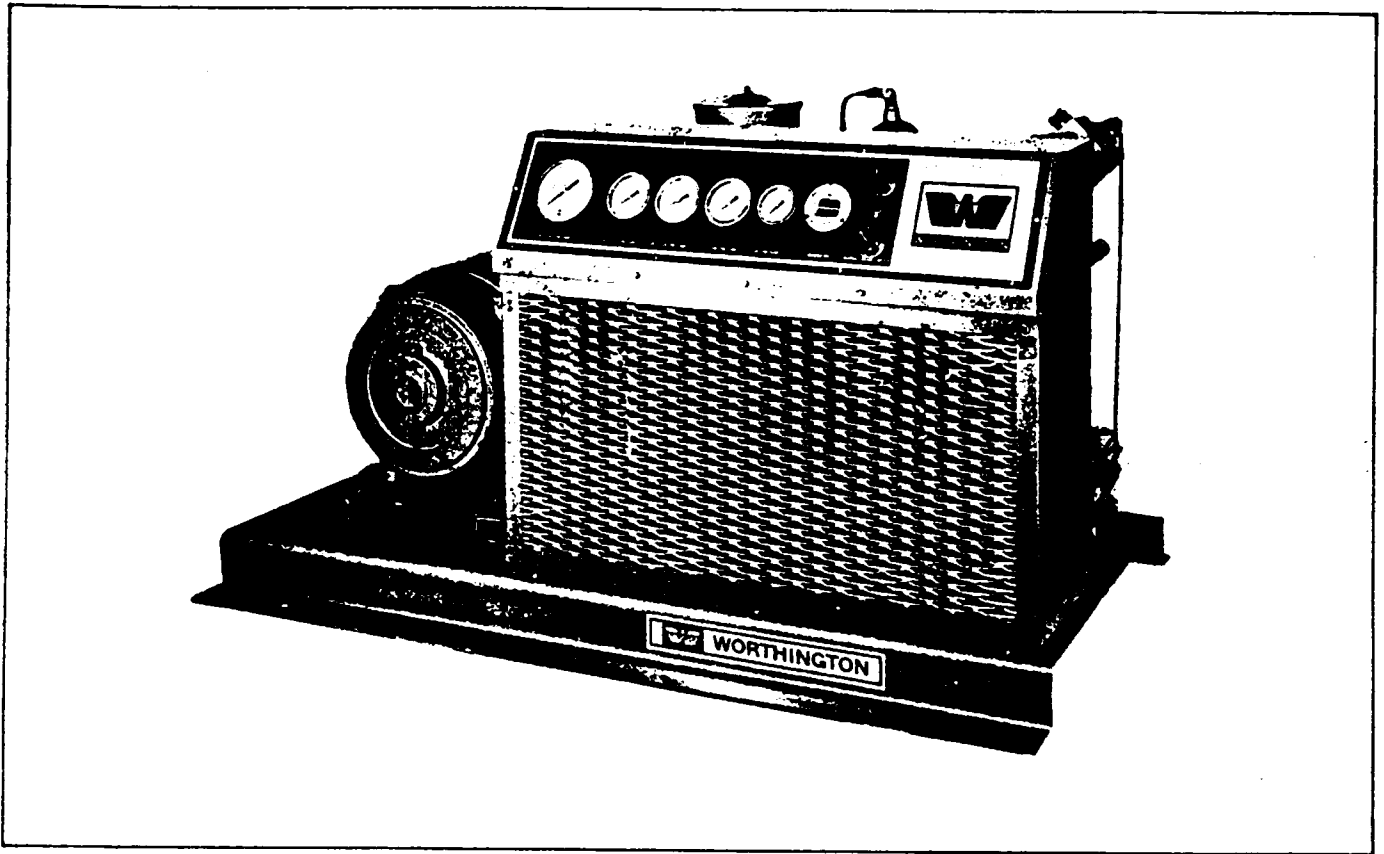


Figure 1. Worthington Compressor, Type-H

Contents

Front Matter

| | <i>Page</i> | <i>Figure</i> | <i>Page</i> |
|--|-------------|---------------|-------------|
| Introduction | 4 | 9 | |
| General | 4 | | |
| Unit Identification | 4 | 10 | |
| Special Units | 4 | 11 | |
| Parts List Description | 5 | 12 | |
| Figure Presentation | 5 | 13 | |
| Use of Parts List | 5 | 14 | |
| Finding a Part Number | 5 | 15 | |
| Finding a Part Number When Group or Assembly is Known | 6 | 16 | |
| Finding a Part Number When Group or Assembly is Known | 6 | 17 | |
| Parts Ordering Instructions | 6 | 18 | |
| Repair Part Kits | 6 | 19 | |
| Returning Parts to Factory | 7 | 20 | |
| Abbreviations | 7 | 21 | |
| | | 22 | |
| Third and Fourth Stage Cyl. and Piston Group | | | 16 |
| Second Stage Valves | | | 18 |
| Unloader Valve Group | | | 20 |
| Cooler Group | | | 22 |
| Drive Group | | | 24 |
| Oil Pump Group | | | 26 |
| Crankcase Group | | | 28 |
| Instrument Panel Group | | | 30 |
| Frame Group | | | 32 |
| Valve Assembly, Unloader | | | 34 |
| Separator Assembly | | | 35 |
| Cooler Group, Model SBBS | | | 36 |
| Third-Stage Separator Group, Model SBB | | | 38 |
| Cooler Group, Model SABC | | | 39 |

Parts List

| <i>Figure</i> | | <i>Page</i> | <i>Table</i> | | <i>Page</i> |
|---------------|---|-------------|--------------|------------------|-------------|
| 6 | First-Stage Cylinder-Head | 10 | | Safety Valves | 13 |
| 7 | Third-Stage Cylinder-Head | 12 | | Drive Components | 25 |
| 8 | First and Second Stage Cyl. and Piston Group | 14 | 1 | | |

Type H

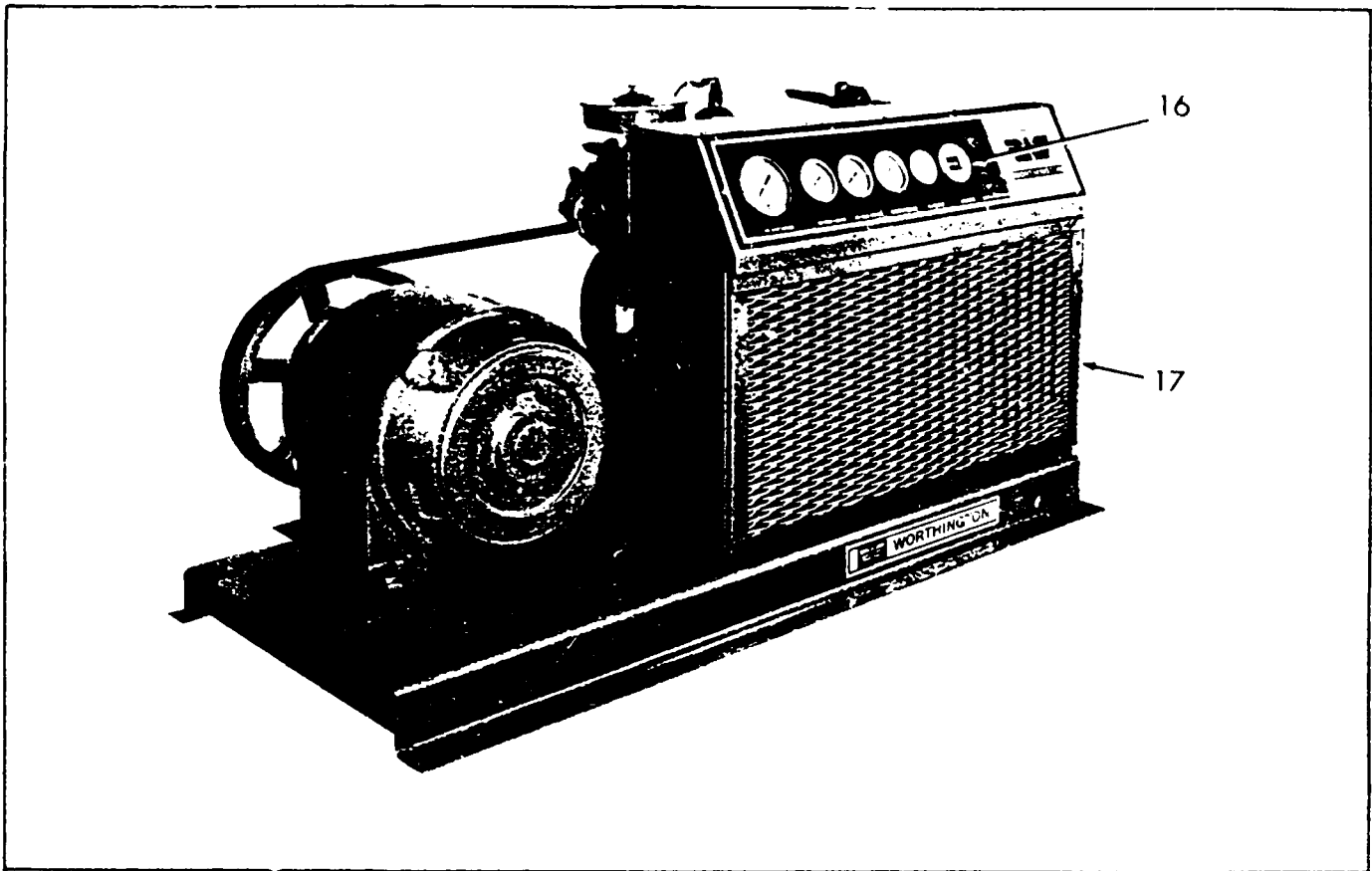


Figure 2. Worthington Type H Compressor, Left Front

Legend to Figure 2.

| Figure | | Page |
|--------|------------------------|------|
| 16 | Instrument Panel Group | 30 |
| 17 | Frame Group | 32 |

Introduction

General

The Type-H compressor is a V-styled, double-acting, motor driven unit with air-cooled intercoolers and after-coolers. A typical unit is shown in figure 1. Except for model SBBS, all models have an automatic condensate drain system. Figures 2, 3, 4 and 5 identify groups contained in standard units. Parts listed are common to all models unless noted otherwise in the code column.

Unit Identification

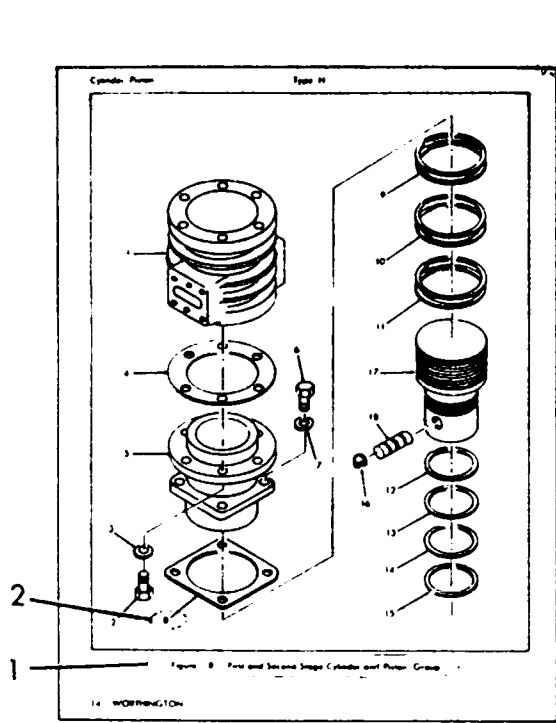
The unit model letters are on a plate, under the oil filler, at the right-side of the compressor. The compressor speed and discharge pressure are marked on the decal on the top panel cover to help identify parts in tables I and II.

Special Units

Refer to supplement sheets, your purchase order, or consult the factory for parts used on special units.

Parts List Description

Sample pages are shown with an explanation of their content as an aid for understanding the information presented.



| Part No. | Part Name | Quantity | Code | Use On Model |
|----------|----------------------|----------|------|--------------|
| 1 | CYLINDER HEAD GASKET | 1 | | SAB |
| 2 | SCREW 1/2"x1/8" LENS | 4 | | SABC |
| 3 | SCREW 1/2"x1/8" LENS | 4 | | SBB |
| 4 | CYLINDER HEAD GASKET | 1 | | SAB |
| 5 | CYLINDER HEAD GASKET | 1 | | SAB |
| 6 | SCREW 1/2"x1/8" LENS | 4 | | SABC |
| 7 | SCREW 1/2"x1/8" LENS | 4 | | SBB |
| 8 | SCREW 1/2"x1/8" LENS | 4 | | SABC |

1. **Group or Assembly** – Corresponds with group or assembly in the contents list on page 3.
2. **Key Number** – Corresponds with number on figure.
3. **Part Number** – Always order part by this number.
4. **Description** – Part name and assembly information. Model numbers indicate part limited to model listed.
5. **Attaching Parts** – Parts required to attach component.
6. **Detail Part of Assembly** – Period before part name indicates it is a detail part of assembly it follows.
7. **Quantity** – The quantity per unit or assembly. "REF" indicates the quantity is listed where referenced in

- the description column. "AR" indicates the quantity is as required to assemble the part.
8. **Code** – The part is used only on the model indicated by the code, or all models when no code is listed.

| Parts Coded | Use On Model |
|-------------|--------------|
| 1 | SAB |
| 2 | SABC |
| 3 | SBB |

Figure Presentation

Figures 2, 3, 4 and 5 identify groups and assemblies. Figure 6 and following figures show the parts contained in groups and assemblies, and key the part to the list. Usually the part from one side is shown when the part on the opposite side is the same or similar. Bolts, screws, washers and pins are shown larger than their proper proportion and part detail simplified for easier identification.

Use of Parts List

Finding a Part Number

1. Find the group where the part is located in figure 2, 3, 4 or 5.
2. Refer to the page number referenced in the legend of figure 2, 3, 4 and 5.
3. Find the part in the figure, reference the key number in the part list and note the part number and description.

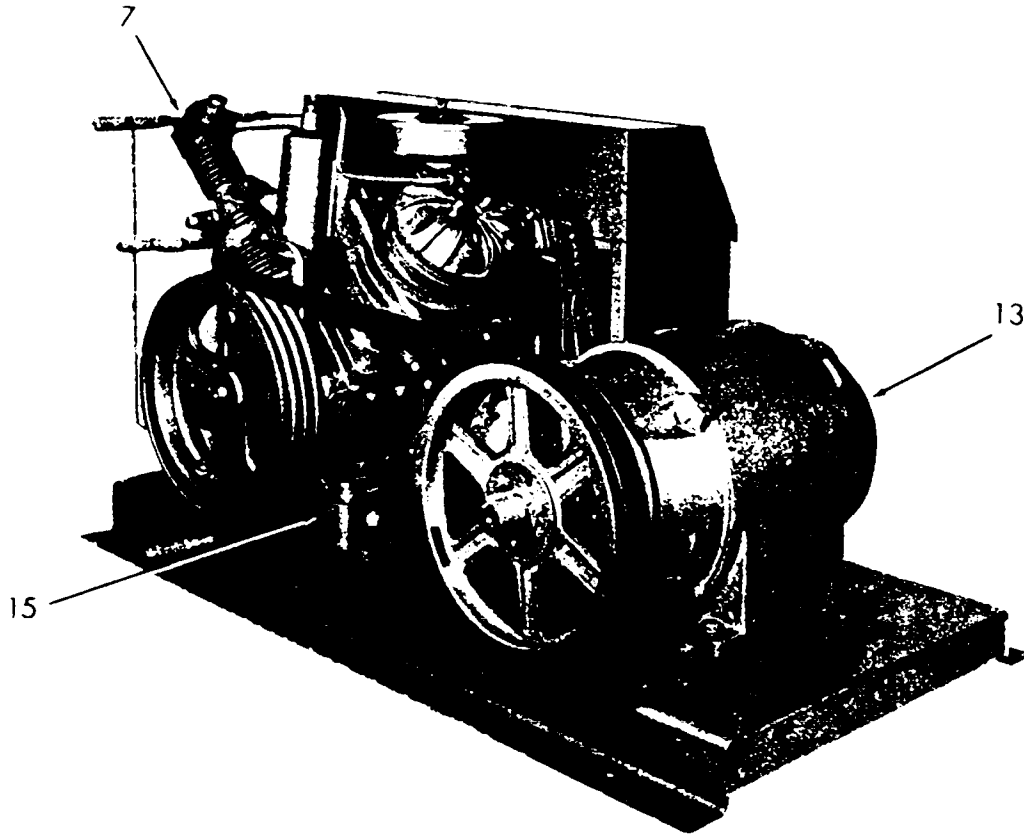


Figure 3. Worthington Type H Compressor, Left Rear

Legend to Figure 3.

| Figure | | Page | Figure | | Page |
|--------|---------------------------------|------|--------|-----------------|------|
| 7 | Third-Stage Cylinder-Head Group | 12 | 15 | Crankcase Group | 28 |
| 13 | Drive Group | 24 | | | |

Finding a Part Number when the Group or Assembly is Known

Refer to the Contents for the page number, turn to the page and follow step 3 above.

Repair Part Kits

Repair part kits contain parts usually required for repair and are available as noted below. The kits are applicable to all models unless noted otherwise.

Parts Ordering Instructions

Order parts from your local distributor by supplying your MODEL LETTERS and COMPRESSOR SERIAL NUMBER located on the plate under oil filler, and PART NUMBER, PART NAME and QUANTITY required.

An assembly rather than individual parts may be purchased by ordering the assembly part number.

Order motor parts from the motor manufacturer's distributor.

| Kit Part Number | Title | Models |
|-----------------|---------------------------|----------------|
| KIT-1765 | Ring Set 1st + 2nd Stages | |
| KIT-1373 | Gasket Kit | |
| KIT-1006 | 1st Stage Valve Kit | |
| KIT-1007 | 2nd Stage Valve Kit | |
| KIT-1008 | High Pressure Valve Kit | |
| *KIT-1431 | 1-1/16 Dia. H.P. Ring Set | SAB, SABC only |
| *KIT-1322 | 1-1/4 Dia. H.P. Ring Set | SAB, SABC only |
| KIT-1633 | 1-1/4 Dia. H.P. Ring Set | SBB only |
| KIT-1432 | Unloader Valve Kit | |
| KIT-1292 | H.P. Separator Kit | |

* 3rd + 4th Stage Ring Sets

Type H

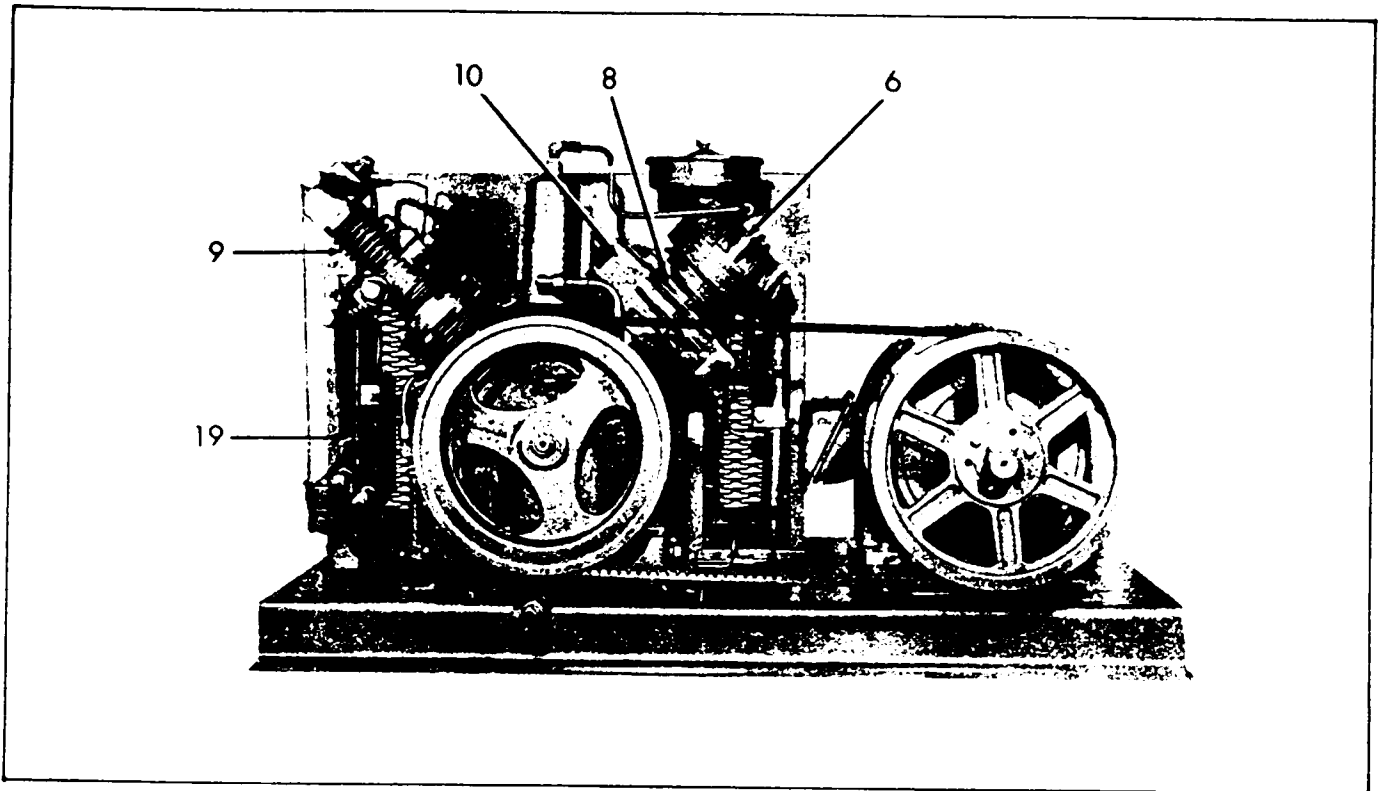


Figure 4. Worthington Type H Compressor, Rear

Legend to Figure 4.

| Figure | | Page | Figure | | Page |
|--------|--|------|--------|--|------|
| 6 | First-Stage Cylinder-Head Group | 10 | 9 | Third and Fourth Stage Cylinder and Piston Group | 16 |
| 8 | First and Second Stage Cylinder and Piston Group | 14 | 10 | Second-Stage Valves | 18 |
| | | | 19 | Separator Assembly | 35 |

Returning Parts to Factory

Obtain permission and shipping instructions from the factory before returning parts. Worthington will not accept parts returned without permission and not in keeping with our shipping instructions.

Abbreviations

Abbreviations used follow:

AR — as required

ESNA — Elastic Stop-Nut Corporation of America

Fig. — figure

HP — horsepower

H.T. — heat-treated

No. — number

NPT — National Pipe Thread

ODT — outside diameter of tube

REF — reference

SEMS — pre-assembled screw-lockwasher combination

SKT. — socket

Sch. — socket head

Rd. — Round

Hd. — Head

Type H

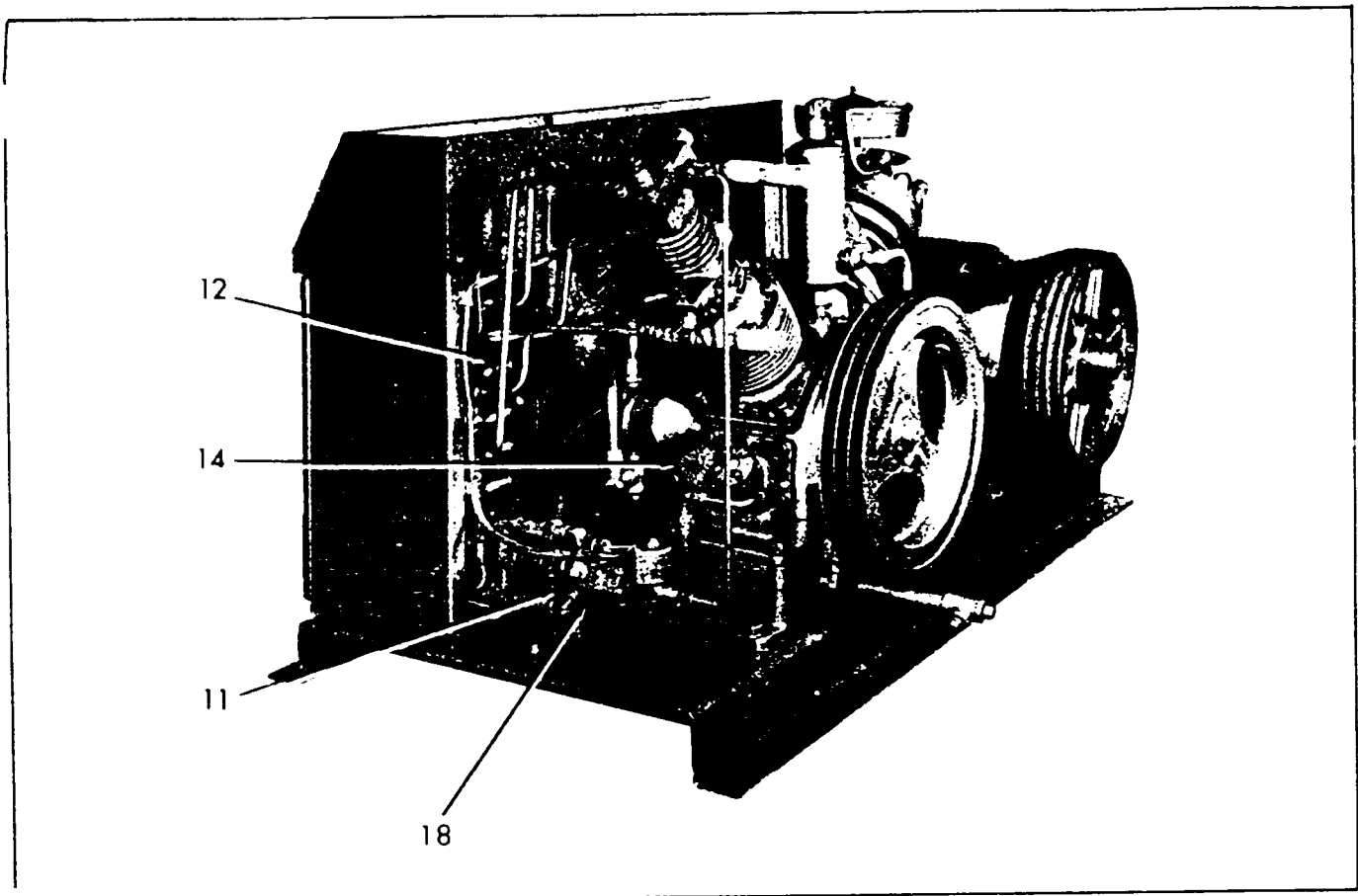


Figure 5. Worthington Type H Compressor, Right Rear

Legend to Figure 5.

| Figure | | Page | Figure | | Page |
|--------|----------------------|------|--------|--------------------------|------|
| 11 | Unloader Valve Group | 20 | 14 | Oil Pump Group | 26 |
| 12 | Cooler Group | 22 | 18 | Valve Assembly, Unloader | 34 |

Packaged Spares Kit

Recommended for keeping on hand
in case of emergency breakdown.

KIT-1634, Packaged Spares Kit for SB Units

KIT-1632, Packaged Spares Kit for SA Units

| Part No. | Part Name | Qty. | Part No. | Part Name | Qty. |
|----------|-------------------------------------|------|----------|-------------------------------------|------|
| KIT-1765 | L.P. RING SET | 1 | KIT-1765 | L.P. RING SET | 1 |
| KIT-1373 | GASKET SET | 1 | KIT-1373 | GASKET SET | 1 |
| KIT-1006 | 1ST STAGE VALVE KIT | 1 | KIT-1006 | 1ST STAGE VALVE KIT | 1 |
| KIT-1007 | 2ND STAGE VALVE KIT | 1 | KIT-1007 | 2ND STAGE VALVE KIT | 1 |
| KIT-1008 | H.P. VALVE KIT | 1 | KIT-1008 | H.P. VALVE KIT | 1 |
| KIT-1633 | 1- $\frac{1}{4}$ DIA. H.P. RING SET | 1 | KIT-1431 | 1- $\frac{1}{8}$ DIA. H.P. RING SET | 1 |
| KIT-1432 | UNLOADER VALVE KIT | 1 | KIT-1322 | 1- $\frac{1}{4}$ DIA. H.P. RING SET | 1 |
| Y-34 | KEY, FAN HUB & OIL PUMP | 2 | KIT-1432 | UNLOADER VALVE KIT | 1 |
| Y-192 | KEY, COMPR. SHEAVE | 1 | KEY-34 | KEY, FAN HUB & OIL PUMP | 2 |
| KOS-144 | SEAL, SHEAVE END | 1 | KEY-192 | KEY, COMPR. SHEAVE | 1 |
| SEL-94 | SEAL, OIL PUMP | 1 | KOS-144 | SEAL, SHEAVE END | 1 |
| FLR-308 | FILTER, AIR | 1 | SEL-94 | SEAL, OIL PUMP | 1 |
| | | | FLR-308 | FILTER, AIR | 1 |

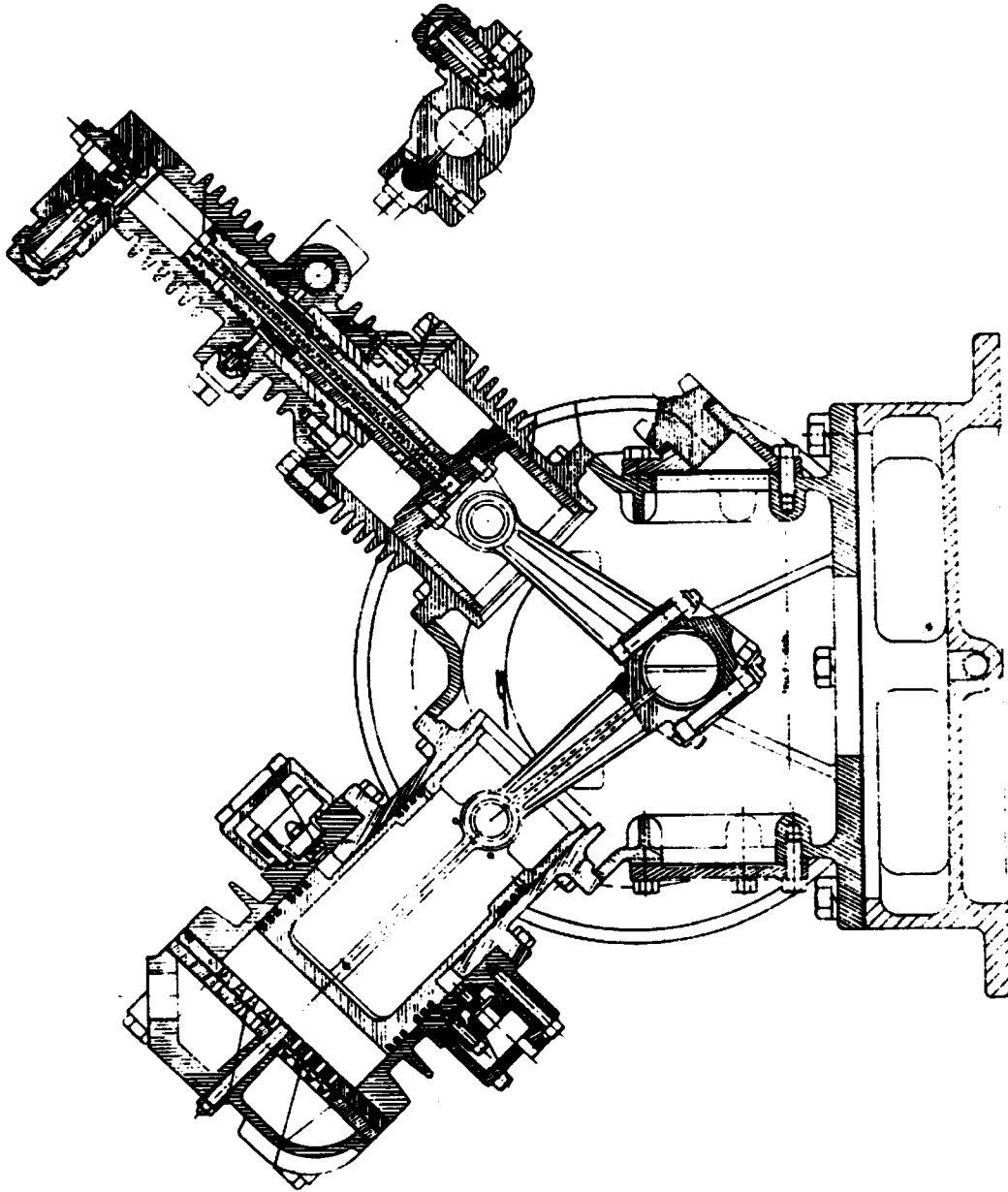


Figure 5A Compressor Cross Section (SA & SB)

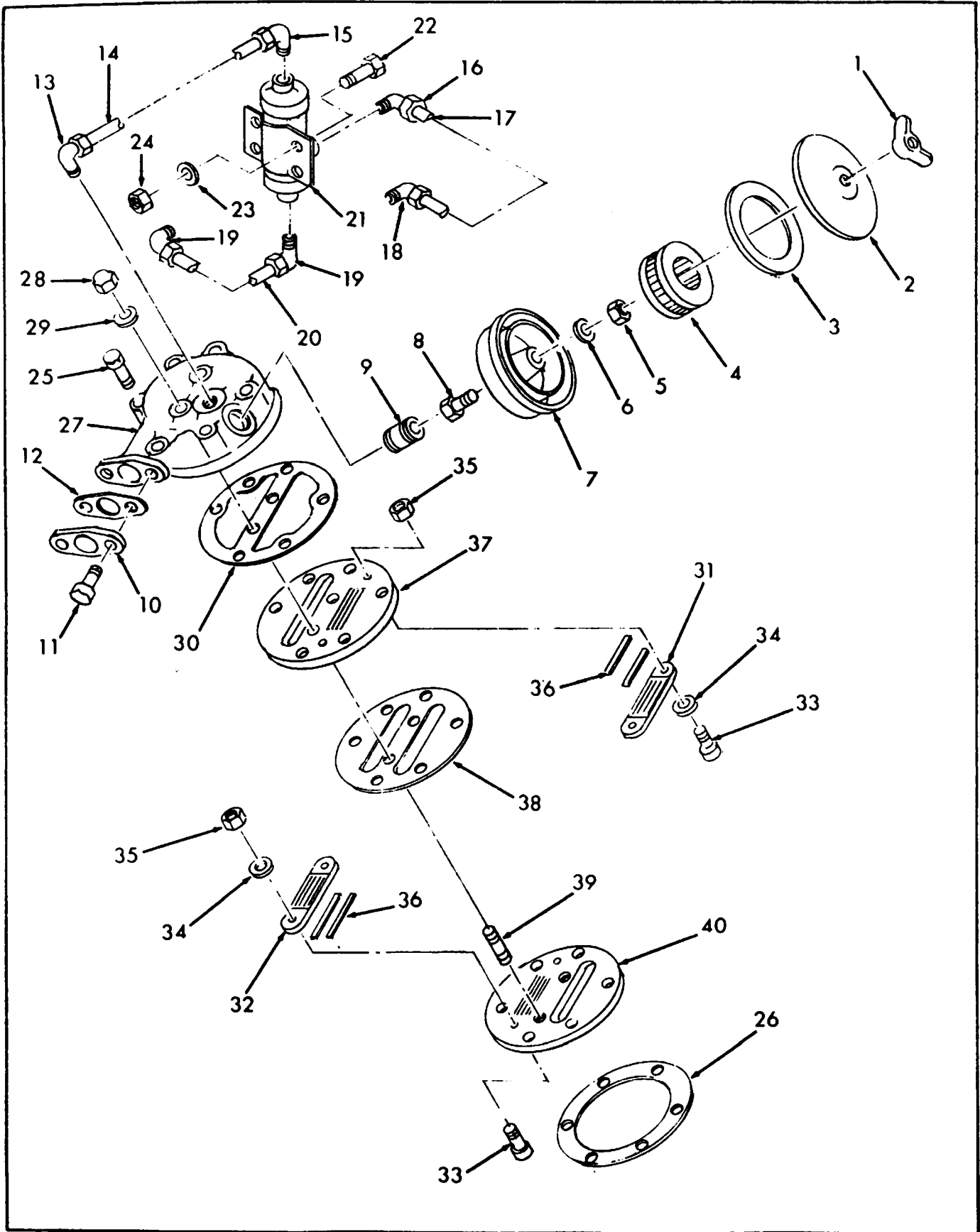


Figure 6. First-Stage Cylinder-Head Group

| Key No. | Part No. | Description | Qty. | Code |
|---------|-----------|---|------|------|
| 6- | | FIRST-STAGE CYLINDER-HEAD GROUP | | |
| 1 | NUT-1173 | NUT, 1/4-20 Wing - - - - - | 1 | |
| 2 | COV-1220B | COVER, Muffler (Includes GKT-2855) - - - - - | 1 | |
| 3 | GKT-2855 | .GASKET, Cover - - - - - | 1 | |
| 4 | FLR-308 | FILTER ELEMENT - - - - - | 1 | |
| 5 | NUT-520 | NUT, 1/4-20 Hex Jam - - - - - | 1 | |
| 6 | WAS-503 | WASHER, 1/4 Lock - - - - - | 1 | |
| 7 | MUF-256 | MUFFLER - - - - - | 1 | |
| 8 | BLT-505 | BOLT, 1/4-20 x 1-1/4 Long, Hex Head - - - - - | 1 | |
| 9 | NIP-630 | NIPPLE, 3/4 NPT x 2-1/2 Long - - - - - | 1 | |
| 10 | FLG-764 | FLANGE, 1st Stage Intercooler (Part of INT-138) - - - - - | 1 | |
| | | (ATTACHING PARTS) | | |
| 11 | SCR-891 | SCREW, 1/2-13 x 1-1/2 Long, Sch. - - - - - | 2 | |
| | | ----*---- | | |
| 12 | GKT-928 | GASKET, Flange - - - - - | 1 | |
| 13 | ELL-1502 | ELBOW, 3/8 NPT x 3/8 ODT - 90° Male - - - - - | 1 | |
| 14 | TUB-4757 | TUBE, 1st Stage Head To Separator - - - - - | 1 | |
| 15 | ELL-1384 | ELBOW, 1/2 NPT x 3/8 ODT - 90° Male - - - - - | 1 | |
| 16 | ELL-1357 | ELBOW, 1/2 NPT x 1/2 ODT - 90° Male - - - - - | 1 | |
| 17 | TUB-5609 | TUBE, Separator to Crankcase - - - - - | 1 | |
| 18 | ELL-1356 | ELBOW, 3/8 NPT x 1/2 ODT - 90° Male - - - - - | 1 | |
| 19 | ELL-1383 | ELBOW, 1/4 NPT x 3/8 ODT - 90° Male - - - - - | 2 | |
| 20 | TUB-5397 | TUBE, Separator to Sump - - - - - | 1 | |
| 21 | SEP-86A | SEPARATOR, Crankcase Vent - - - - - | 1 | |
| | | (ATTACHING PARTS) | | |
| 22 | SCR-1532 | SCREW, 1/4-20 x 1/2 Long, Hex Head - - - - - | 4 | |
| 23 | WAS-542 | WASHER, 1/4 Lock - - - - - | 4 | |
| 24 | NUT-830 | NUT, 1/4-20 Hex - - - - - | 4 | |
| | | ----*---- | | |
| | HD-940A | FIRST-STAGE HEAD ASSEMBLY - - - - - | 1 | |
| | | (ATTACHING PARTS) | | |
| 25 | SCR-1831 | SCREW, 1/2-13 x 3-1/4 Long, Hex Head - - - - - | 6 | |
| | | ----*---- | | |
| 26 | GKT-2052 | GASKET, Head to Cylinder - - - - - | 1 | |
| 27 | HD-940 | .HEAD, Cylinder - - - - - | 1 | |
| | | (ATTACHING PARTS) | | |
| 28 | NUT-1175 | .NUT, 5/16-18 Acorn - - - - - | 2 | |
| 29 | GKT-587 | .GASKET, 9/16 OD x 11/32 ID x 1/16 Thk Copper - - - - - | 2 | |
| | | ----*---- | | |
| 30 | GKT-2794 | .GASKET, Head to Valve Plate - - - - - | 1 | |
| 31 | GRD-595 | .GUARD ASSEMBLY, Suction Valve - - - - - | 1 | |
| 32 | GRD-594 | .GUARD ASSEMBLY, Discharge Valve - - - - - | 1 | |
| | | (ATTACHING PARTS) | | |
| 33 | SCR-1937 | .SCREW, Valve Guard - - - - - | 4 | |
| 34 | GKT-593 | .GASKET, 5/8 OD x 25/64 ID x 1/16 Thk Copper - - - - - | 4 | |
| 35 | NUT-1374 | .NUT, 3/8-16 Hex - - - - - | 4 | |
| | | ----*---- | | |
| 36 | STR-117 | .STRIP, Valve - - - - - | 16 | |
| 37 | PLT-3199 | .PLATE, Suction Valve, Upper - - - - - | 1 | |
| 38 | GKT-2040 | .GASKET, Valve Plate - - - - - | 1 | |
| 39 | STU-964 | .STUD, 5/16-18 x 3-1/8 Long - - - - - | 2 | |
| 40 | PLT-3198 | .PLATE, Discharge Valve, Lower - - - - - | 1 | |

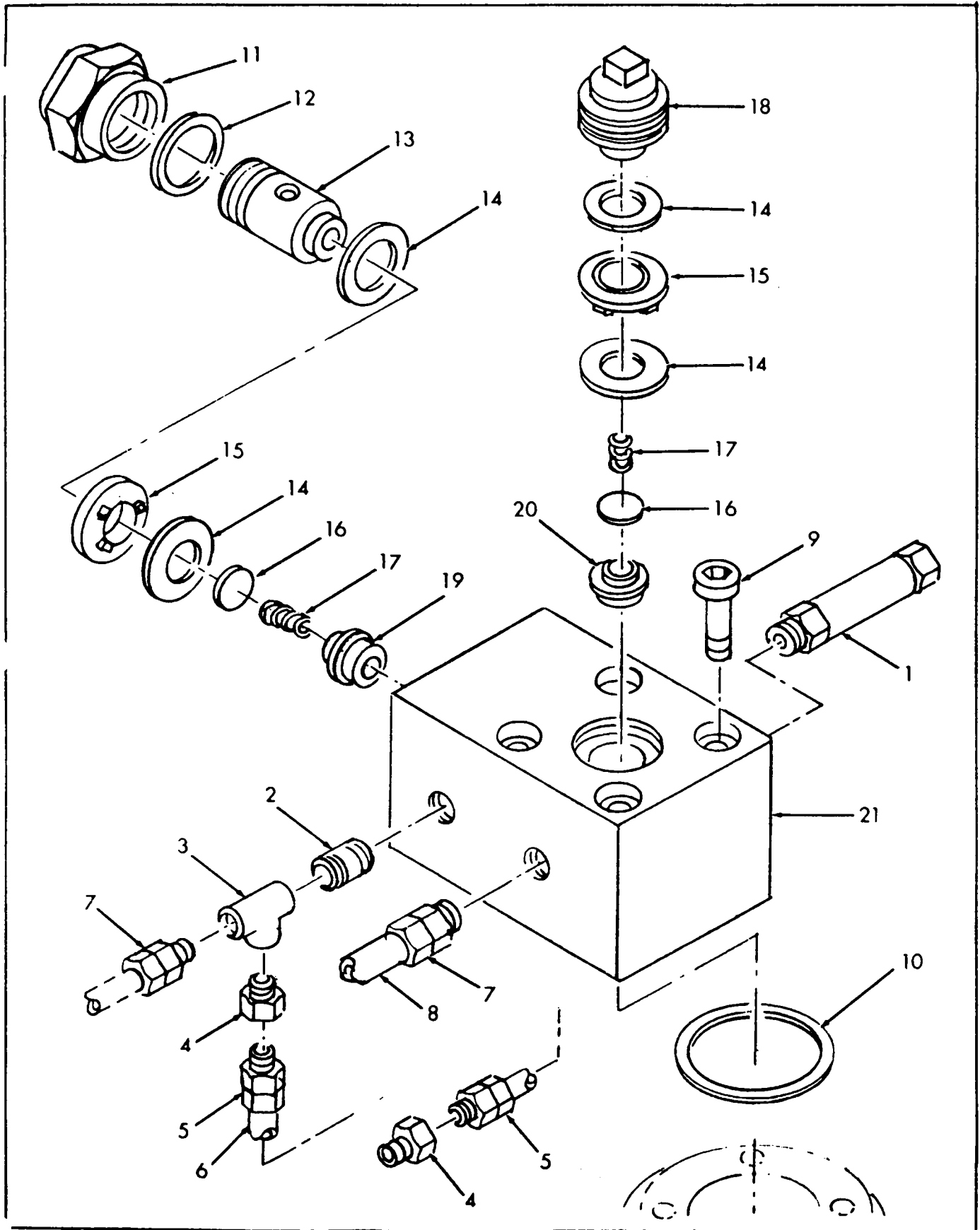


Figure 7. Third-Stage Cylinder-Head Group

Type H

Cylinder-Head

| Key No. | Part No. | Description | Qty. | Code |
|---------|----------|--|------|------|
| 7- | | THIRD-STAGE CYLINDER-HEAD GROUP | | |
| 1 | VAL-1362 | VALVE, Safety Relief, 2nd Stage - - - - - | 1 | 1,2 |
| | VAL- | VALVE, Safety Relief, 2nd Stage (See below) - - - - - | 1 | 3 |
| 2 | NIP-1589 | NIPPLE, 1/4 NPT - Close - - - - - | 1 | |
| 3 | TEE-840 | TEE, 1/4 NPT (Parker #1/4 MMO-S) - - - - - | 1 | |
| 4 | BUS-502 | BUSHING, 1/4 NPT x 1/8 NPT - - - - - | 2 | |
| 5 | CON-350 | CONNECTOR, 1/8 NPT x 1/8 ODT - Male - - - - - | 2 | |
| 6 | TUB-5399 | TUBE, 3rd Stage Head to 2nd Stage Gage - - - - - | 1 | |
| 7 | CON-354 | CONNECTOR, 1/4 NPT x 3/8 ODT - Male - - - - - | 2 | |
| 8 | TUB-5389 | TUBE, 3rd Stage Head to Unloader Check Valve - - - - - | 1 | |
| | HD-805 | THIRD-STAGE HEAD ASSEMBLY - - - - - (ATTACHING PARTS) | 1 | |
| 9 | SCR-1852 | SCREW, 7/16-14 x 2-1/2 Long, Cap - - - - - ---*--- | 4 | |
| 10 | GKT-628 | GASKET, Head to Cylinder - - - - - | 1 | |
| 11 | CAP-5 | .CAP, Suction Valve - - - - - | 1 | |
| +12 | GKT-582 | .GASKET, Cap to Head - - - - - | 1 | |
| 13 | PLU-681 | .PLUG, Suction Valve - - - - - | 1 | |
| +14 | GKT-614 | .GASKET, Valve Guide - - - - - | 4 | |
| +15 | GDE-91 | .GUIDE, Valve - - - - - | 2 | |
| 16 | DIS-118 | .DISC, Valve - - - - - | 2 | |
| +17 | SPG-420 | .SPRING, Valve - - - - - | 2 | |
| 18 | PLU-682 | .PLUG, Discharge Valve - - - - - | 1 | |
| | HD-761A | .HEAD ASSEMBLY - - - - - | 1 | |
| +19 | INS-173 | ..INSERT, Suction Port - - - - - | 1 | |
| -20 | INS-199 | ..INSERT, Discharge Port - - - - - | 1 | |
| 21 | HD-761 | ..HEAD, 3rd Stage - - - - - | 1 | |

Safety Valves

SAB and SABC Models

| DISCHARGE PSR PSIG | 4TH STAGE VALVE # |
|--------------------|-------------------|
| 3000 | VAL-1371 |
| 3500 | VAL-1372 |
| 4000 | VAL-1369 |
| 4500 | VAL-1505 |
| 5000 | VAL-1373 |

SBB and SBBS Models

| DISCHARGE PSR PSIG | 2ND STAGE VALVE # | 3RD STAGE VALVE # |
|--------------------|-------------------|-------------------|
| 500 | VAL-1362 | VAL-1435 |
| 1000 | VAL-1362 | VAL-1349 |
| 1500 | VAL-1435 | VAL-1363 |
| 2000 | VAL-1435 | VAL-1368 |
| 2500 | VAL-1435 | VAL-1646 |
| 3000 | VAL-1435 | VAL-1254 |

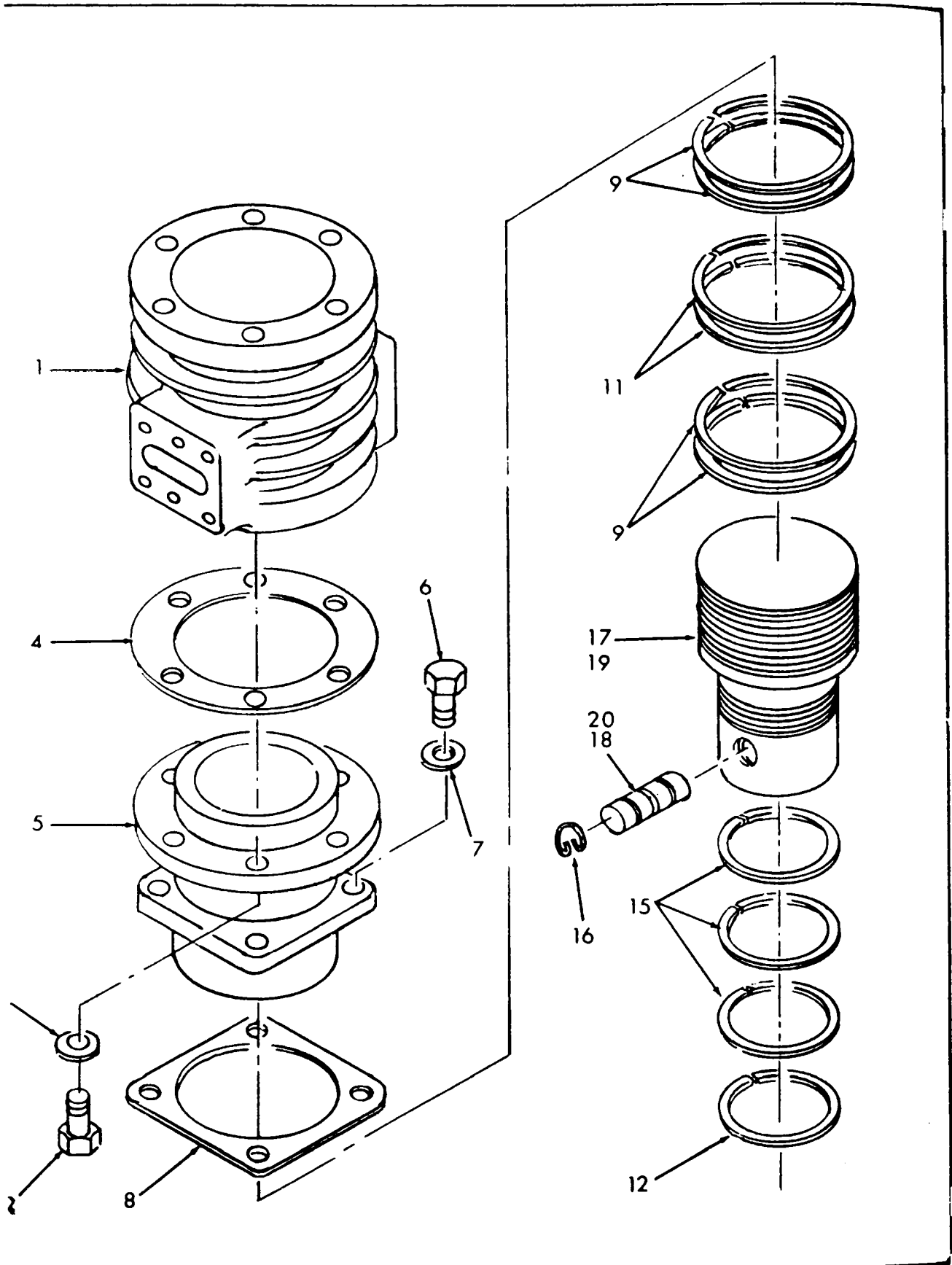


Figure 8. First and Second Stage Cylinder and Piston Group

| Key No. | Part No. | Description | Qty. | Code |
|---------|-----------|--|------|------|
| 8- | | FIRST AND SECOND STAGE CYLINDER AND PISTON GROUP | | |
| 1 | CYL-213 | CYLINDER, Upper - - - - - | 1 | |
| | | (ATTACHING PARTS) | | |
| 2 | SCR-1202 | SCREW, 3/8-16 x 1" Long, Hex Head - - - - - | 6 | |
| 3 | WAS-544 | WASHER, 3/8 Lock - - - - - | 6 | |
| | | ----*---- | | |
| 4 | GKT-2553 | GASKET, Cylinder to Cylinder - - - - - | 1 | |
| 5 | CYL-343 | CYLINDER, Lower - - - - - | 1 | 1,2 |
| | CYL-214 | CYLINDER, Lower - - - - - | 1 | 3 |
| | | (ATTACHING PARTS) | | |
| 6 | SCR-1837 | SCREW, 1/2-13 x 1-1/4 Long, Hex Head - - - - - | 4 | |
| 7 | WAS-546 | WASHER, 1/2 Lock - - - - - | 4 | |
| | | ----*---- | | |
| 8 | GKT-2807 | GASKET, Cylinder to Crankcase - - - - - | 1 | |
| 9 | RNG-1658 | RING, Compression, Side Seal, 2-Piece (4-5/8 x 1/8) - | 4 | |
| 11 | RNG-1654 | RING, Oil, 3-Piece (4-5/8 x 1/8, 4-5/8 x .018) - - - | 2 | |
| 12 | RNG-1453 | RING, Oil, 3-Piece (3-3/4 x 3/16) - - - - - | 1 | |
| 15 | RNG-1659 | RING, Compression, Side Seal, 2-Piece (3-3/4 x 1/8) - | 3 | |
| 16 | SPG-217 | SPRING, Wrist Pin Lock - - - - - | 2 | |
| 17 | PST-477A | PISTON ASSEMBLY, Low Pressure (Thru Serial #SA-199)- - | 1 | |
| 18 | PIN-927A | .PIN, Wrist - - - - - | 1 | |
| 19 | PST-545A | PISTON ASSEMBLY, Low Pressure (All SB & Beyond SA-200) | 1 | |
| 20 | PIN-1076A | . PIN, Wrist - - - - - | 1 | |

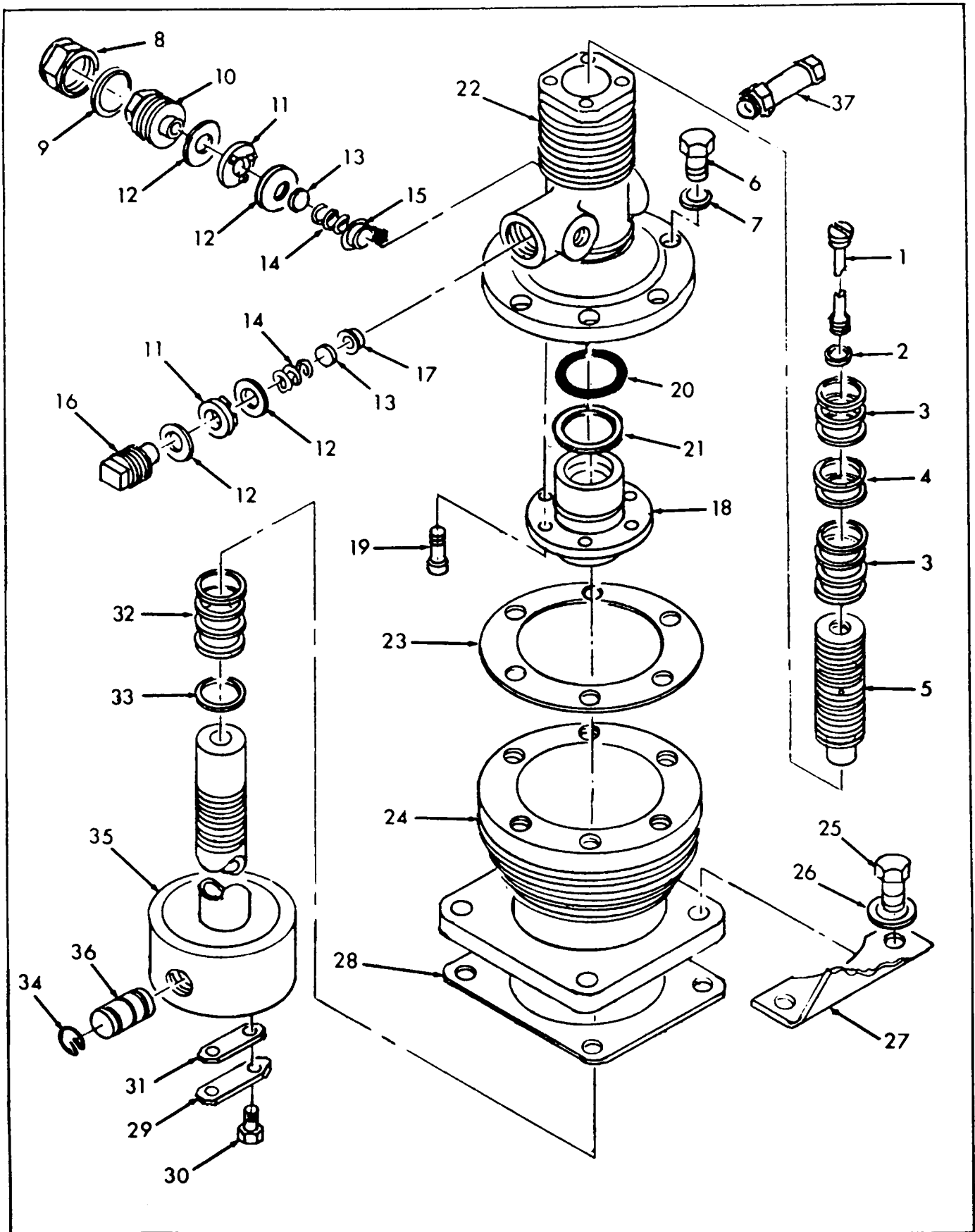


Figure 9. Third and Fourth Stage Cylinder and Piston Group

| Key No. | Part No. | Description | Qty. | Code |
|---------|----------|--|------|------|
| 9- | | THIRD AND FOURTH STAGE CYLINDER AND PISTON GROUP | | |
| 1 | SCR-1913 | SCREW, Hi-Pressure Piston - - - - - | 1 | |
| 2 | GKT-2742 | GASKET, Piston Screw - - - - - | 1 | |
| 3 | RNG-271 | RING, Compression, Two-piece (Use 3 on SBB and SBRS)- | 7 | |
| 4 | RNG-1657 | RING, Oil (Use one on SBB and SBBS) - - - - - | 2 | |
| 5 | PST-418 | PISTON, Third Stage - - - - - | 1 | 1,2 |
| | CYL-431 | CYLINDER ASSEMBLY, High Pressure - - - - - (ATTACHING PARTS) | 1 | |
| 6 | SCR-1202 | SCREW, 3/8-16 x 1" Long, Hex Head - - - - - | 6 | |
| 7 | WAS-544 | WASHER, 3/8 Lock - - - - - ----*---- | 6 | |
| 8 | CAP-5 | .CAP, Suction Valve - - - - - | 1 | 1,2 |
| 9 | GKT-582 | .GASKET, Cap - - - - - | 1 | 1,2 |
| 10 | PLU-681 | .PLUG, Suction Valve - - - - - | 1 | 1,2 |
| 11 | GDE-91 | .GUIDE, Valve - - - - - | 2 | 1,2 |
| 12 | GKT-614 | .GASKET, Valve Guide - - - - - | 4 | 1,2 |
| 13 | DIS-118 | .DISC, Valve - - - - - | 2 | 1,2 |
| 14 | SPG-420 | .SPRING, Valve - - - - - | 2 | 1,2 |
| 15 | INS-173 | .INSERT, Suction Port - - - - - | 1 | 1,2 |
| 16 | PLU-682 | .PLUG, Discharge Valve - - - - - | 1 | 1,2 |
| 17 | INS-148 | .INSERT, Discharge Port - - - - - | 1 | 1,2 |
| 18 | SLV-292 | .SLEEVE, Packing - - - - - | 1 | 1,2 |
| 19 | SCR-2111 | .SCREW, 5/16-18 x 7/8 Long Socket Head Cap, Nylok - - | 6 | 1,2 |
| 20 | RNG-1377 | ."O" RING (Linear #11-222-7483-90) - - - - - | 1 | 1,2 |
| 21 | RNG-1457 | .RING, Back Up - - - - - | 1 | |
| 22 | CYL-324 | .CYLINDER, High Pressure - - - - - | 1 | 1,2 |
| | CYL-475 | CYLINDER, High Pressure - - - - - | 1 | 3 |
| 23 | GKT-2051 | GASKET, Cylinder to Cylinder - - - - - | 1 | |
| 24 | CYL-170 | CYLINDER, Guide - - - - - (ATTACHING PARTS) | 1 | |
| 25 | SCR-1837 | SCREW, 1/2-13 x 1-1/4 Long, Hex Head - - - - - | 4 | |
| 26 | WAS-546 | WASHER, 1/2 Lock - - - - - ----*---- | 4 | |
| 27 | SUP-1467 | SUPPORT, Crankcase Vent Separator - - - - - | 1 | |
| 28 | GKT-2807 | GASKET, Cylinder to Crankcase - - - - - | 1 | |
| 29 | PLT-2696 | PLATE, Crosshead Piston - - - - - (ATTACHING PARTS) | 1 | |
| 30 | SCR-1823 | SCREW, 1/4-20 x 1/2 Long, Socket Head Cap - - - - - ----*---- | 2 | |
| 31 | GKT-2649 | GASKET, Crosshead Piston Plate - - - - - | 1 | |
| 32 | RNG-1692 | RING, Compression, Two-piece - - - - - | 4 | 1,2 |
| 33 | RNG-1693 | RING, Oil - - - - - | 1 | 1,2 |
| 34 | SPG-217 | SPRING, Wrist Pin Lock - - - - - | 2 | |
| 35 | PST-488A | PISTON ASSEMBLY, Bi-metallic Crosshead - - - - - | 1 | |
| 36 | PIN-927A | .PIN, Wristpin - - - - - | 1 | |
| 37 | VAL-1363 | VALVE, Safety, Third Stage - - - - - | 1 | |

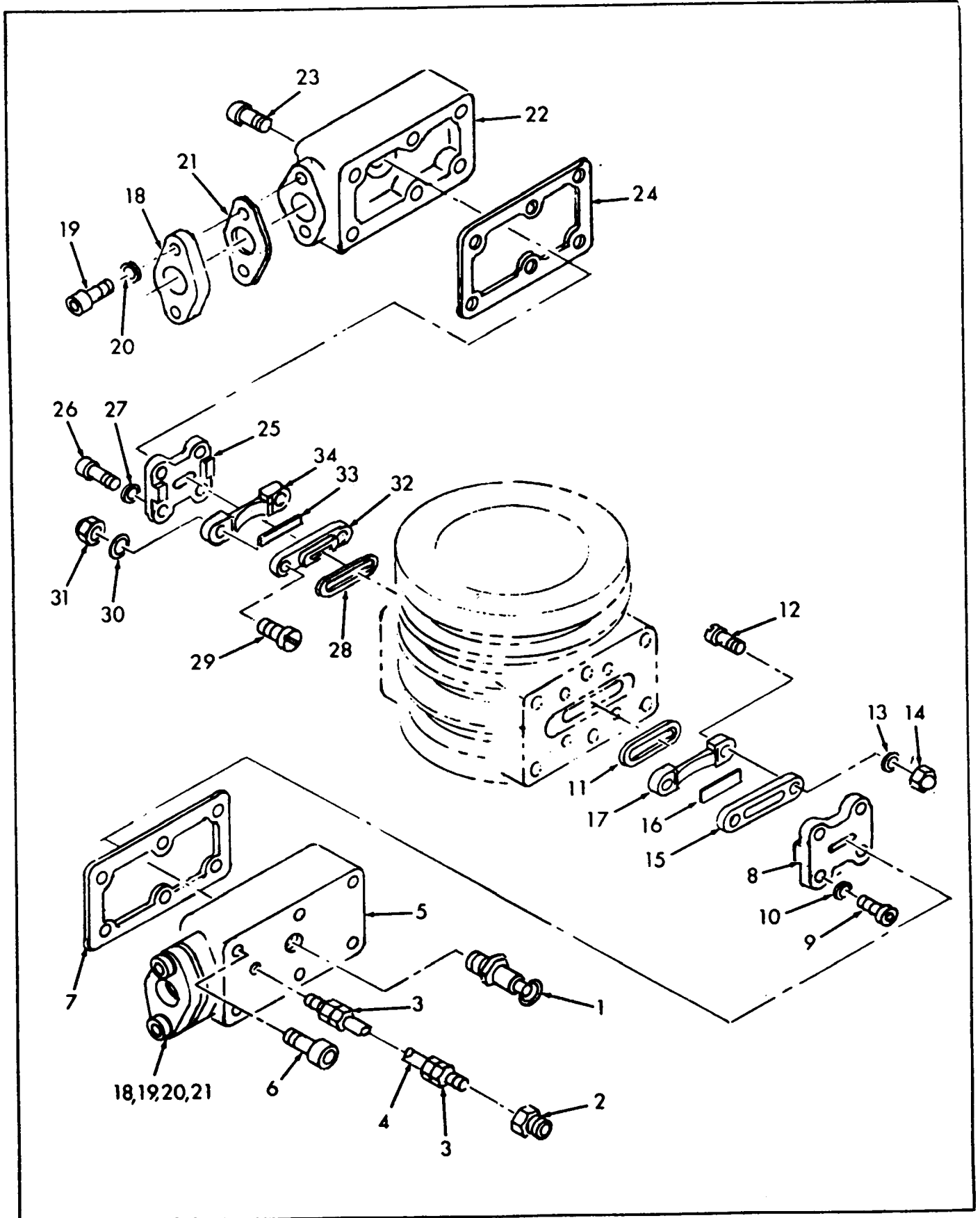


Figure 10. Second-Stage Valves

Type H

Valves

| Key No. | Part No. | Description | Qty. | Code |
|---------|----------|--|------|------|
| 10- | | SECOND-STAGE VALVES | | |
| 1 | VAL-1341 | VALVE, Safety Relief, 70 psig - 1st stage - - - | 1 | 1,2 |
| | VAL-1710 | VALVE, Safety Relief, 90 psig - - - - - | 1 | 3 |
| 2 | BUS-502 | BUSHING, 1/4 x 1/8 NPT - - - - - | 1 | |
| 3 | CON-350 | CONNECTOR, 1/8 NPT x 1/8 ODT-Male - - - - - | 2 | |
| 4 | TUB-5395 | TUBE, 2nd Stage Valve to 1st Stage Gage - - - - | 1 | |
| 5 | BOD-241 | BODY, Suction Valve - - - - - | 1 | |
| | | (ATTACHING PARTS) | | |
| 6 | SCR-1276 | SCREW, 5/16-18 x 2" Long, Socket Head Cap - - - | 6 | |
| | | ----*---- | | |
| 7 | GKT-2490 | GASKET, Body to Cylinder - - - - - | 1 | |
| 8 | PLT-3200 | PLATE, Valve - - - - - | 1 | |
| | | (ATTACHING PARTS) | | |
| 9 | SCR-939 | SCREW, 1/4-20 x 1" Long, Socket Head Cap - - - - | 4 | |
| 10 | WAS-542 | WASHER, 1/4 Lock - - - - - | 4 | |
| | | ----*---- | | |
| 11 | GKT-2491 | GASKET, Valve Seat - - - - - | 1 | |
| | VAL-1448 | VALVE ASSEMBLY, Suction - - - - - | 1 | |
| 12 | SCR-1670 | .SCREW, Valve Guard - - - - - | 2 | |
| 13 | WAS-27 | .WASHER, Valve Guard (Copper) - - - - - | 2 | |
| 14 | NUT-1240 | .NUT, 1/4-20 Acorn - - - - - | 2 | |
| 15 | SET-176 | .SEAT, Valve - - - - - | 1 | |
| 16 | STR-15 | .STRIP, Valve - - - - - | 1 | |
| 17 | GRD-593 | .GUARD, Valve Strip - - - - - | 1 | |
| 18 | FLG-765 | FLANGE, 2nd Stage Intercooler (Included with INT-139) - - - - - | 2 | |
| | | (ATTACHING PARTS) | | |
| 19 | SCR-906 | SCREW, 3/8-16 x 1-1/4 Long, Socket Head Cap - - | 4 | |
| 20 | WAS-846 | WASHER, 3/8 H.T. - - - - - | 4 | |
| | | ----*---- | | |
| 21 | GKT-894 | GASKET, Flange - - - - - | 2 | |
| 22 | BOD-286 | BODY, Discharge Valve - - - - - | 1 | |
| | | (ATTACHING PARTS) | | |
| 23 | SCR-1276 | SCREW, 5/16-18 x 2" Long, Socket Head Cap - - - | 6 | |
| | | ----*---- | | |
| 24 | GKT-2490 | GASKET, Body to Cylinder - - - - - | 1 | |
| 25 | PLT-3200 | PLATE, Valve - - - - - | 1 | |
| | | (ATTACHING PARTS) | | |
| 26 | SCR-939 | SCREW, 1/4-20 x 1" Long, Socket Head Cap - - - | 4 | |
| 27 | WAS-542 | WASHER, 1/4 Lock - - - - - | 4 | |
| | | ----*---- | | |
| 28 | GKT-2491 | GASKET, Valve Seat - - - - - | 1 | |
| | VAL-1449 | VALVE ASSEMBLY, Discharge - - - - - | 1 | |
| 29 | SCR-1670 | .SCREW, Valve Guard - - - - - | 2 | |
| 30 | WAS-27 | .WASHER, Valve Guard (Copper) - - - - - | 2 | |
| 31 | NUT-1240 | .NUT, 1/4-20 Acorn - - - - - | 2 | |
| 32 | SET-177 | .SEAT, Valve - - - - - | 1 | |
| 33 | STR-15 | .STRIP, Valve - - - - - | 1 | |
| 34 | GRD-592 | .GUARD, Valve Strip - - - - - | 1 | |

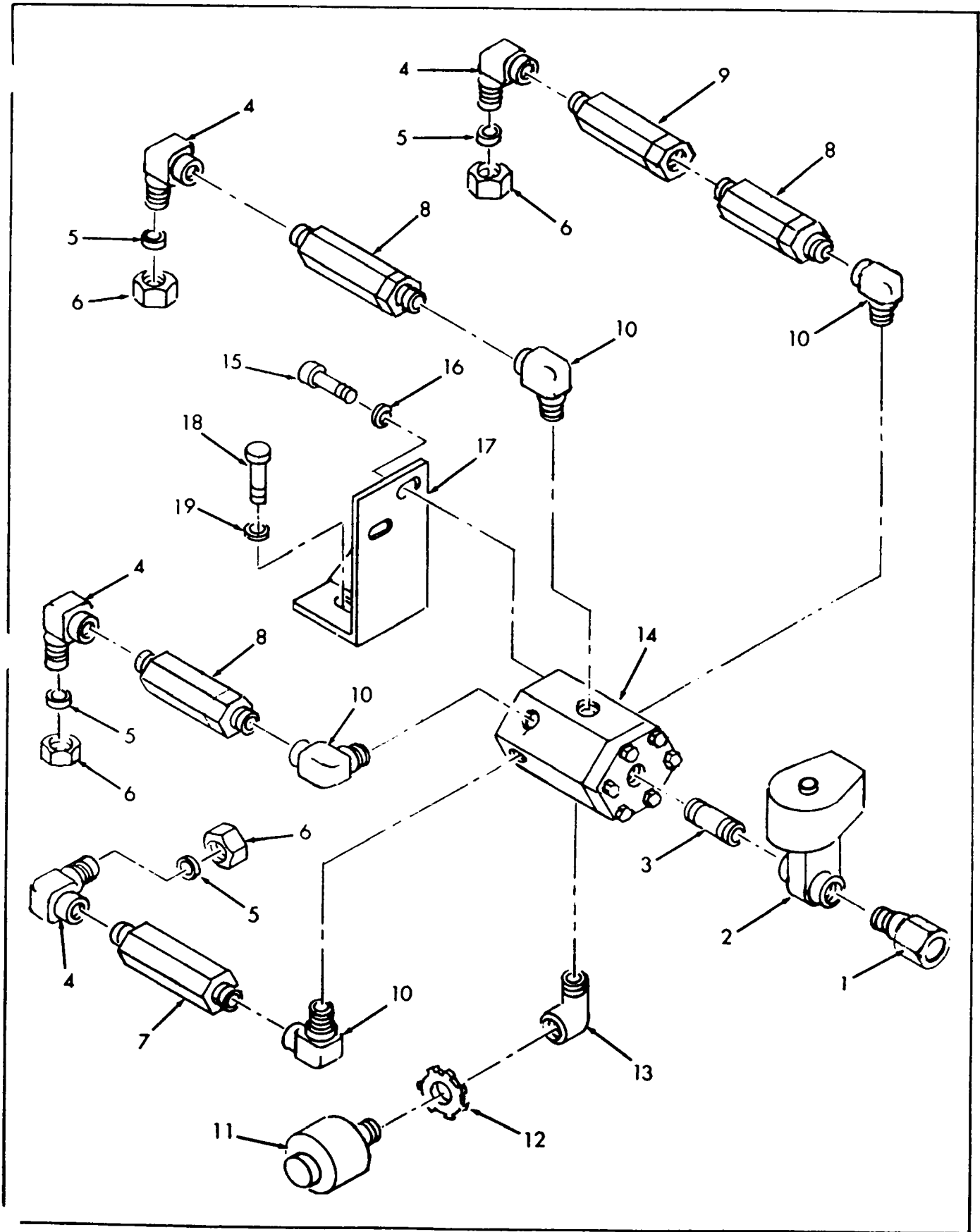


Figure 11. Unloader Valve Group

Type H

Valves

| Key No. | Part No. | Description | Qty. | Code |
|---------|----------|--|------|------|
| 11- | | UNLOADER VALVE GROUP | | |
| 1 | CON-352 | CONNECTOR, 1/4 NPT x 1/4 ODT ° Male - - - - - | 1 | |
| 2 | VAL-1993 | VALVE, Solenoid - - - - - | 1 | |
| 3 | NIP-1589 | NIPPLE, 1/4 NPT - Close - - - - - | 1 | |
| 4 | ELL-1503 | ELBOW, 1/4 NPT x 1/4 ODT - 90° Female (Use 3 on SBB and SBBS) (Parker #4-4 DU-S) - - - - - | 4 | |
| 5 | SLV-241 | SLEEVE, 1/4 ODT (Weatherhead #7165 x 4) (Use 3 on SBB and SBBS)- - - - - | 4 | |
| 6 | NUT-1209 | NUT, 1/4 ODT (Weatherhead #7105-4) (Use 3 on SBB and SBBS) - - - - - | 4 | |
| 7 | VAL-1551 | VALVE, Back Pressure 4th Stage - - - - - | 1 | 1,2 |
| | PLU-505 | PLUG, 1/4 NPT - - - - - | 1 | 3 |
| 8 | VAL-1552 | VALVE, Check, 1st, 2nd and 3rd Stages - - - - - | 3 | |
| 9 | VAL-1559 | VALVE, Back Pressure - 3rd Stage - - - - - | 1 | |
| 10 | ELL-1396 | ELBOW, 1/2 NPT x 90° Street (Use 3 on SBB and SBBS) (Weatherhead #3409-4) - - - - - | 4 | |
| 11 | MUF-217 | MUFFLER, Unloader Valve - - - - - | 1 | |
| 12 | NUT-1174 | NUT, Muffler - - - - - | 1 | |
| 13 | ELL-531 | ELBOW, 1/2 NPT x 90° Street - - - - - | 1 | |
| 14 | VAL-1644 | VALVE ASSEMBLY, Unloader (See Figure 18) (ATTACHING PARTS) - - - - - | 1 | |
| 15 | SCR-2098 | SCREW, 1/4-20 x 5/8 Long, Hex Head - - - - - | 2 | |
| 16 | WAS-542 | WASHER, 1/4 Lock - - - - - ---*--- | 2 | |
| 17 | BRK-2037 | BRACKET, Unloader Valve (ATTACHING PARTS) - - - - - | | |
| 18 | SCR-1455 | SCREW, 5/16-18 x 1-3/4 Long, Hex Head - - - - - | 2 | |
| 19 | WAS-543 | WASHER, 5/16 Lock - - - - - ---*--- | 2 | |

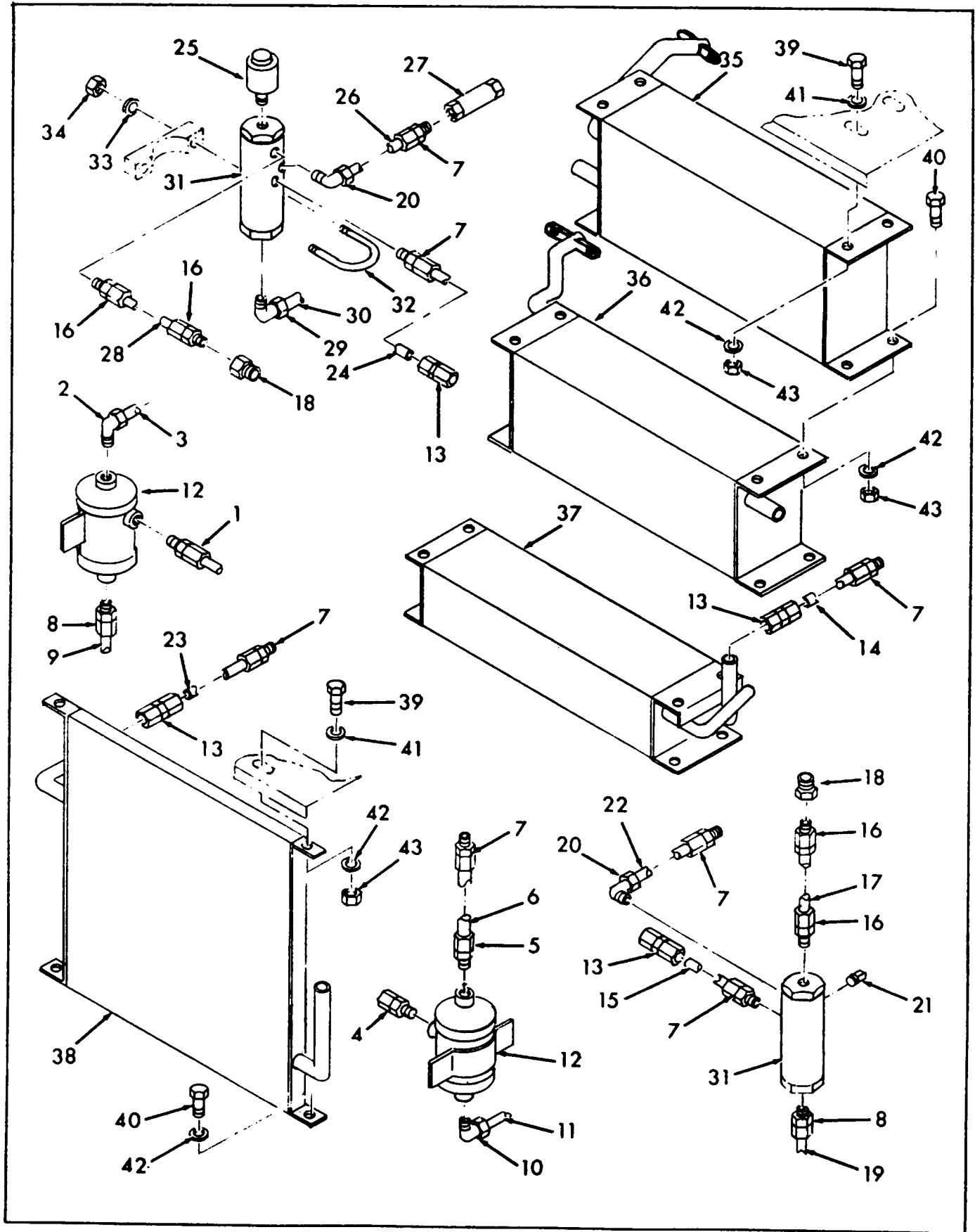


Figure 12. Cooler Group

Type H

Coolers

| Key No. | Part No. | Description | Qty. | Code |
|---------|----------|---|------|-------|
| 12- | | COOLER GROUP | | |
| 1 | CON-358 | CONNECTOR, 1/2 NPT x 3/4 ODT - Male | 1 | |
| 2 | ELL-1395 | ELBOW, 1/2 NPT x 5/8 ODT - 90° | 1 | |
| 3 | TUB-4349 | TUBE, Separator to 2nd Stage Suction | 1 | |
| 4 | CON-357 | CONNECTOR, 1/2 NPT x 5/8 ODT - Male | 1 | |
| 5 | CON-356 | CONNECTOR, 1/2 NPT x 3/8 ODT - Male | 1 | |
| 6 | TUB-5398 | TUBE, Separator to 3rd Stage Suction | 1 | |
| 7 | CON-354 | CONNECTOR, 1/4 NPT x 3/8 ODT (Use 5 on SBB) | 7 | |
| 8 | CON-352 | CONNECTOR, 1/4 NPT x 1/4 ODT | 2 | |
| 9 | TUB-5400 | TUBE, Separator to Unloader Valve | 1 | |
| 10 | ELL-1360 | ELBOW, 1/4 NPT x 1/4 ODT - 90° | 1 | |
| 11 | TUB-5392 | TUBE, Separator to Unloader Valve | 1 | |
| 12 | SEP-88 | SEPARATOR, 1st and 2nd Stages (Use 1 on SBB) | 2 | |
| | SEP-130 | SEPARATOR, 2nd Stage (Use on SSB) | 1 | 3 |
| 13 | UNN-584 | UNION, 3/8 ODT (Use 2 on SBB) | 4 | |
| 14 | TUB-4291 | TUBE, 3rd Stage Discharge Valve to Intercooler | 1 | |
| 15 | TUB-5391 | TUBE, Intercooler to 3rd Stage Separator | 1 | |
| 16 | CON-350 | CONNECTOR, 1/8 NPT x 1/8 ODT (Use 4 on SBB) | 4 | |
| 17 | TUB-5405 | TUBE, Separator to 3rd Stage Gage | 1 | 1,2 |
| 18 | BUS-502 | BUSHING, 1/4 x 1/8 NPT (Use 3 on SBB) | 2 | |
| 19 | TUB-5390 | TUBE, Separator to Unloader Valve | 1 | |
| 20 | ELL-1383 | ELBOW, 1/4 NPT x 3/8 ODT - 90° (Use 1 on SBB) | 2 | |
| 21 | PLU-501 | PLUG, 1/8 NPT | 1 | 1,2 |
| 22 | TUB-6015 | TUBE, Sep. to 4th Stage Suction | 1 | 1,2 |
| | VAL-820 | VALVE, Check - Discharge | 1 | 3 |
| 23 | TUB-5402 | TUBE, Aftercooler to 4th Stage Discharge | 1 | 1,2 |
| 24 | TUB-5396 | TUBE, Aftercooler to Separator | 1 | 1,2 |
| 25 | VAL- | VALVE, Safety - 4th Stage (See Table 2) (Use on SAB and SABC) | 1 | 1,2 |
| 26 | TUB-5406 | TUBE, Separator to Check Valve | 1 | 1,2 |
| 27 | VAL-1694 | VALVE, Check - Discharge | 1 | 1,2 |
| 28 | TUB-5404 | TUBE, Separator to 4th Stage Gage | 1 | 1,2 |
| 29 | ELL-1360 | ELBOW, 1/4 NPT x 1/4 ODT - 90° | 1 | 1,2 |
| 30 | TUB-5393 | TUBE, Separator to Unloader Valve | 1 | 1,2 |
| 31 | SEP-109 | SEPARATOR, 3rd Stage and 4th Stage (Use 1 on SBB) | | |
| | | (See Figure 19) | 2 | 1,2,3 |
| | | (ATTACHING PARTS) | | |
| 32 | CMP-204 | CLAMP, Separator (Use one on SBB) | 2 | 1,2,3 |
| 33 | WAS-543 | WASHER, 5/16 Lock (Use two on SBB) | 4 | 1,2,3 |
| 34 | NUT-527 | NUT, 5/16-18 Hex (Use two on SBB) | 4 | 1,2,3 |
| | | ----*---- | | |
| 35 | INT-138 | INTERCOOLER, 1st Stage (FLG-764 Included) | 1 | |
| 36 | INT-139 | INTERCOOLER, 2nd Stage (FLG-765 Included) | 1 | |
| 37 | INT-114 | INTERCOOLER, 3rd Stage | 1 | 1,2,3 |
| 38 | AFT-62 | AFTERCOOLER | 1 | 1,2 |
| | | (ATTACHING PARTS) | | |
| 39 | SCR-1200 | SCREW, 1/4-20 x 3/4 Long, Hex Head | 6 | |
| 40 | SCR-1532 | SCREW, 1/4-20 x 1/2 Long, Hex Head | 14 | |
| 41 | WAS-583 | WASHER, 1/4 Flat | 6 | |
| 42 | WAS-542 | WASHER, 1/4 Lock | 18 | |
| 43 | NUT-830 | NUT, 1/4-20 Hex | 18 | |

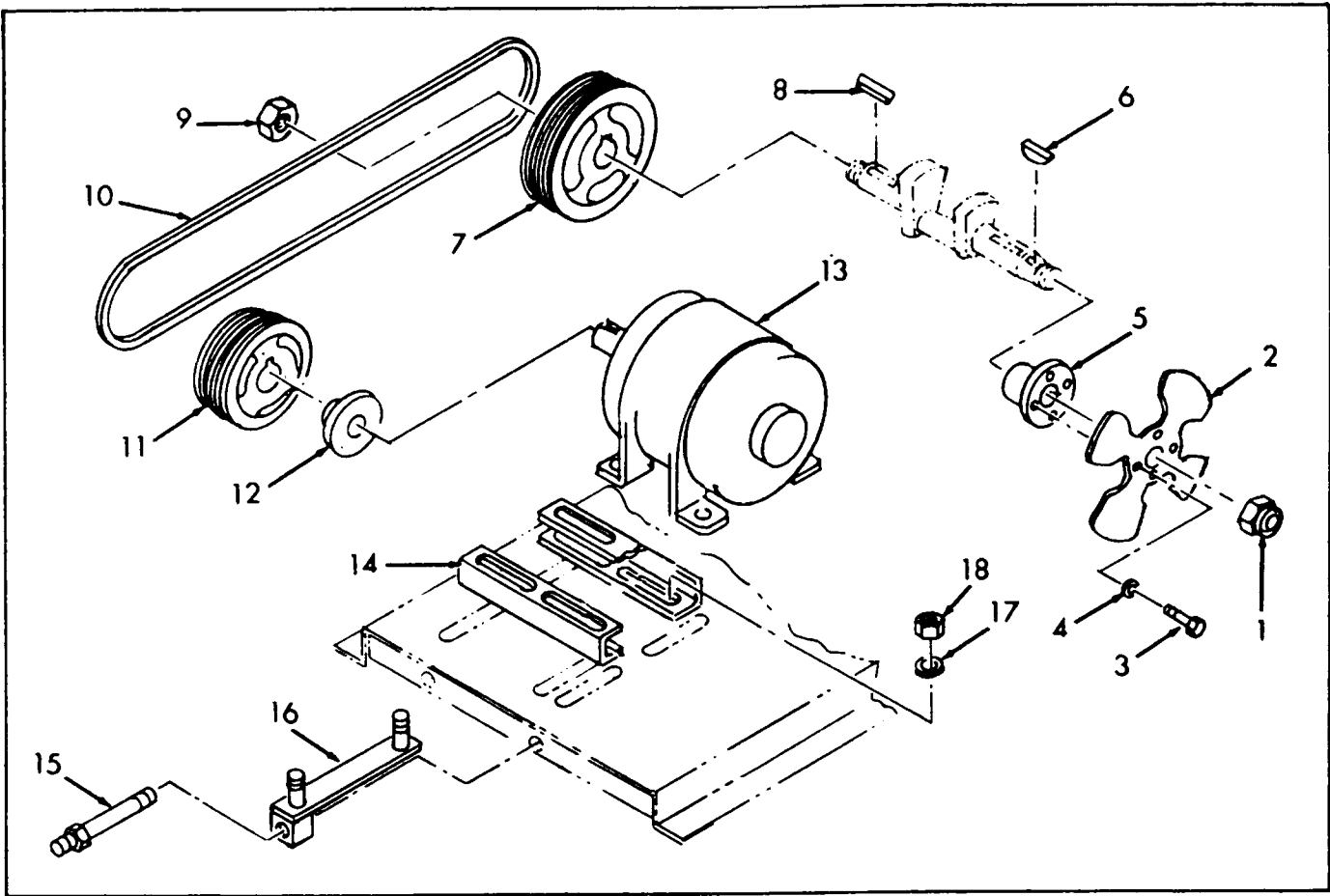


Figure 13. Drive Group

| Key No. | Part No. | Description | Qty. | Code |
|---------|----------|--|------|------|
| 13- | | DRIVE GROUP | | |
| 1 | NUT-1298 | NUT, Hub 1/2-20 NF ESNA | 1 | |
| 2 | FAN-27 | FAN, Compressor (ATTACHING PARTS) | 1 | |
| 3 | SCR-1830 | SCREW, 5/16-18 x 1/2 Long, Hex Head | 4 | |
| 4 | WAS-543 | WASHER, 5/16 Lock ---*--- | 4 | |
| 5 | HUB-209 | HUB, Fan | 1 | |
| 6 | KEY-34 | KEY, Hub (Woodruff #404) | 1 | |
| 7 | SHE-486 | SHEAVE, Driven | 1 | |
| 8 | KEY-192 | KEY, Sheave (Limited) | 1 | |
| 9 | NUT-811 | NUT, Sheave, 7/8-14 ESNA | 1 | |
| 10 | BET- | BELT, "V", Matched Set of 3 (See Table I) | 1 | |
| 11 | SHE- | SHEAVE, Driver (See Table I) | 1 | |
| 12 | HUB- | HUB, Motor (See Table I) | 1 | |
| 13 | MOT- | MOTOR (See Table I) | 1 | |
| 14 | RAL-255 | RAIL, Motor Mounting | 2 | |
| 15 | BLT-1186 | SCREW, Adjusting | 2 | |
| 16 | BAR- | BAR, Motor Adjustment (See Table I) (ATTACHING PARTS) | 2 | |
| 17 | WAS-546 | WASHER, 1/2 Lock | 4 | |
| 18 | NUT-560 | NUT, 1/2-13 Hex | 4 | |

Drive Group Components

Table I

SAB Models

| RPM | PRESS. | MOT- | BET- | HUB- | SHE- | BAR- |
|------|--------|------|------|------|------|------|
| 850 | 2500 | 6014 | 61 | 197 | 1053 | 459 |
| 850 | 3000 | 6014 | 61 | 197 | 1053 | 459 |
| 850 | 3500 | 6014 | 61 | 197 | 1053 | 459 |
| 950 | 2500 | 6015 | 93 | 216 | 929 | 459 |
| 950 | 3000 | 6015 | 93 | 216 | 929 | 459 |
| 950 | 3500 | 6015 | 93 | 216 | 929 | 459 |
| 1250 | 2500 | 6016 | 93 | 218 | 941 | 458 |
| 1250 | 3000 | 6016 | 93 | 218 | 941 | 458 |
| 1250 | 3500 | 6016 | 93 | 218 | 941 | 458 |

SABC Models

| | | | | | | |
|------|------|------|----|-----|------|-----|
| 950 | 4000 | 6015 | 93 | 216 | 929 | 459 |
| 950 | 4500 | 6015 | 93 | 216 | 929 | 459 |
| 950 | 5000 | 6015 | 93 | 216 | 929 | 459 |
| 1250 | 4000 | 6016 | 93 | 218 | 815 | 458 |
| 1250 | 4500 | 6016 | 93 | 218 | 815 | 458 |
| 1250 | 5000 | 6016 | 93 | 218 | 815 | 458 |
| 1750 | 2500 | 6017 | 98 | 218 | 1048 | 458 |
| 1750 | 3000 | 6017 | 98 | 218 | 1048 | 458 |
| 1750 | 3500 | 6017 | 98 | 218 | 1048 | 458 |

SBB and SBBS Models

| | | | | | | |
|------|------|------|----|-----|-----|-----|
| 550 | 500 | 6013 | 61 | 266 | 730 | 460 |
| 550 | 1000 | 6013 | 61 | 266 | 730 | 460 |
| 550 | 1500 | 6013 | 61 | 266 | 730 | 460 |
| 550 | 2000 | 6014 | 61 | 197 | 730 | 459 |
| 550 | 2500 | 6014 | 61 | 197 | 730 | 459 |
| 550 | 3000 | 6014 | 61 | 197 | 730 | 459 |
| 950 | 500 | 6014 | 93 | 216 | 929 | 459 |
| 950 | 1000 | 6014 | 93 | 216 | 929 | 459 |
| 950 | 1500 | 6014 | 93 | 216 | 929 | 459 |
| 950 | 2000 | 6015 | 93 | 216 | 929 | 459 |
| 950 | 2500 | 6015 | 93 | 216 | 929 | 459 |
| 950 | 3000 | 6015 | 93 | 216 | 929 | 459 |
| 1250 | 500 | 6015 | 93 | 216 | 941 | 459 |
| 1250 | 1000 | 6015 | 93 | 216 | 941 | 459 |
| 1250 | 1500 | 6015 | 93 | 216 | 941 | 459 |
| 1250 | 2000 | 6016 | 93 | 218 | 941 | 458 |
| 1250 | 2500 | 6016 | 93 | 218 | 941 | 458 |
| 1250 | 3000 | 6016 | 93 | 218 | 941 | 458 |

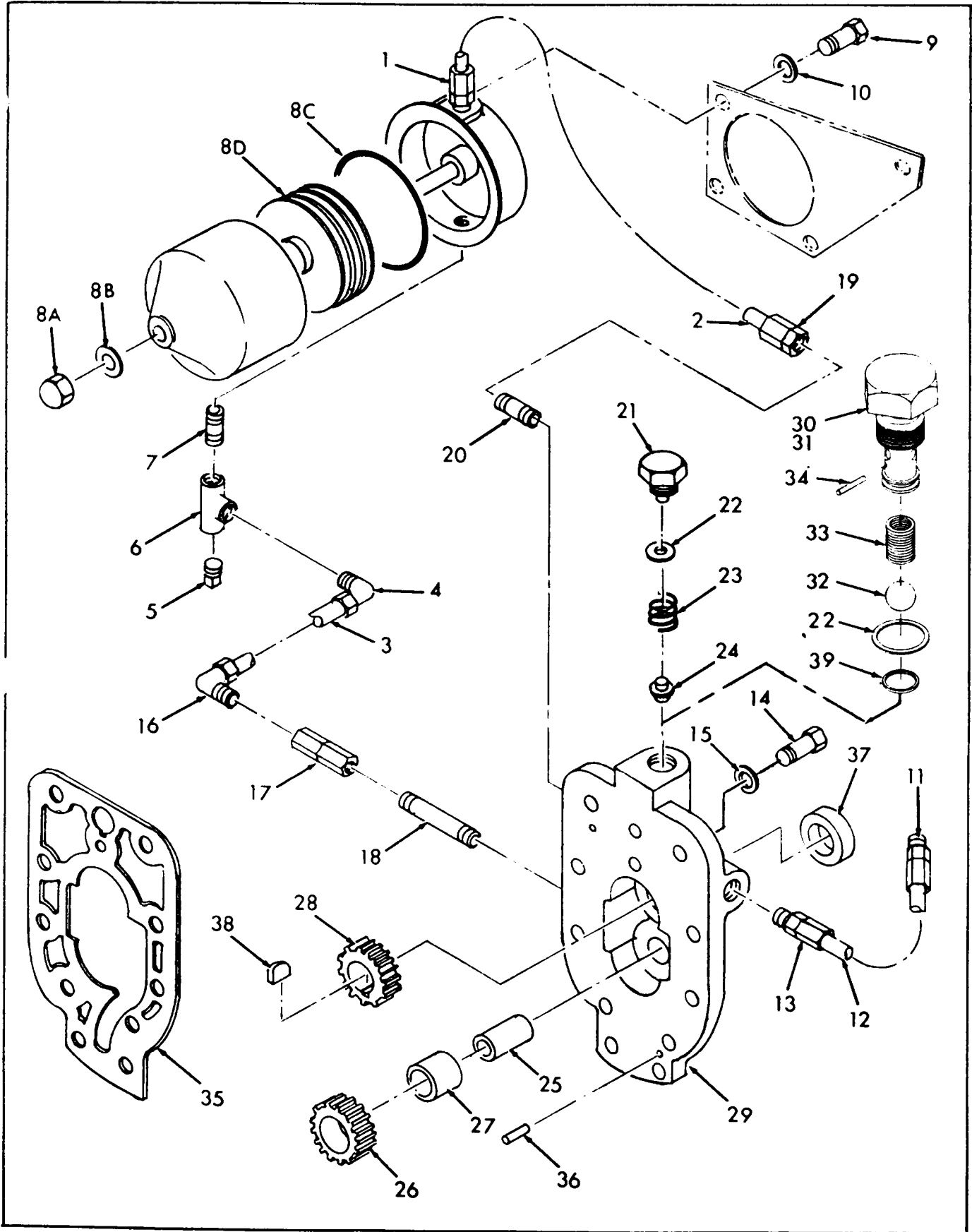


Figure 14. Oil Pump Group

Type H

Oil Pump

| Key No. | Part No. | Description | Qty. | Code |
|---------|----------|---|------|------|
| 14- | | OIL PUMP GROUP | | |
| 1 | CON-432 | CONNECTOR, 3/8 NPT x 1/2 ODT - Male (Weather-head #7205 x 8) - - - - - | 1 | |
| 2 | TUB-4738 | TUBE, Oil Filter to Oil Pump - - - - - | 1 | |
| 3 | TUB-5394 | TUBE, Oil Pump to Oil Filter - - - - - | 1 | |
| 4 | ELL-1495 | ELBOW, 3/8 NPT x 1/2 ODT - 90° Male (Weather-head #7405 x 8) - - - - - | 1 | |
| 5 | PLU-509 | PLUG, 3/8 NPT - - - - - | 1 | |
| 6 | TEE-527 | TEE, 3/8 NPT - - - - - | 1 | |
| 7 | NIP-580 | NIPPLE, 3/8 NPT - Close - - - - - | 1 | |
| 8 | FLR-296 | FILTER ASSEMBLY, Oil (Not illustrated assembled) | 1 | |
| 8A | NUT-1175 | .NUT, 5/16-18 Acorn - - - - - | 1 | |
| 8B | GKT-587 | .GASKET, Copper - - - - - | 1 | |
| 8C | RNG-1695 | ."O" RING - - - - - | 1 | |
| 8D | FLR-305 | .FILTER ELEMENT - - - - - (ATTACHING PARTS) | 1 | |
| 9 | SCR-1830 | SCREW, 5/16-18 x 1/2 Long, Hex Head - - - - - | 2 | |
| 10 | WAS-543 | WASHER, 5/16 Lock - - - - - ---*--- | 2 | |
| 11 | CON-352 | CONNECTOR, 1/4 NPT x 1/4 ODT - Male - - - - - | 1 | |
| 12 | TUB-5401 | TUBE, Oil Pump to Oil Gage - - - - - | 1 | |
| 13 | CON-351 | CONNECTOR, 1/8 NPT x 1/4 ODT - Male (Weather-head #7205 x 4) - - - - - | 1 | |
| | PMP-293 | PUMP, Oil - - - - - (Attaching Parts) | 1 | |
| 14 | SCR-829 | SCREW, 3/8-16 x 7/8" Long Hex Head - - - - - | 10 | |
| 15 | WAS-544 | WASHER, 3/8 Lock - - - - - ---*--- | 10 | |
| 16 | ELL-1475 | .ELBOW, 1/4 NPT x 1/2 ODT - 90° - - - - - | 1 | |
| 17 | CPL-795 | .COUPLING, 1/4 NPT - - - - - | 1 | |
| 18 | NIP-1536 | .NIPPLE, 1/4 NPT x 2-1/2 Long - - - - - | 1 | |
| 19 | CON-440 | .CONNECTOR, 1/4 NPT x 1/2 ODT - Female - - - - - | 1 | |
| 20 | NIP-1534 | .NIPPLE, 1/4 NPT x 3" Long - - - - - | 1 | |
| 21 | CAP-674 | .CAP, Oil Pump By-Pass ("SA" up to 099) - - - - - | 1 | 1,2 |
| 22 | GKT-602 | .GASKET, Cap - - - - - | 1 | |
| 23 | SPG-559 | .SPRING, Regulator, Oil Pump By-Pass("SA" up to 099) | 1 | 1,2 |
| 24 | POP-4 | .POPPET, Oil Pump By-Pass ("SA" up to 099) - - - - - | 1 | 1,2 |
| 25 | SHF-259 | .SHAFT, Driven Gear - - - - - | 1 | |
| | GER-84A | .GEAR, Driven - - - - - | 1 | |
| 26 | GER-84 | ..GEAR - - - - - | 1 | |
| 27 | BUS-198 | ..BUSHING - - - - - | 1 | |
| 28 | GER-83 | .GEAR, Driver - - - - - | 1 | |
| 29 | BOD-240 | .BODY, Oil Pump - - - - - | 1 | |
| 30 | VAL-1810 | ·VALVE ASSEMBLY, Relief ("SA" - 100 and up) Items 21, 23 & 24 "SA" up to 099 | 1 | |
| 31 | BOD-374 | .. BODY, Relief for Oil Pump - - - - - | 1 | |
| 32 | BAL-9 | .. BALL - - - - - | 1 | |
| 33 | SPG-559 | .. SPRING - - - - - | 1 | |
| 34 | PIN-709 | .. PIN - - - - - | 1 | |
| 35 | GKT-2492 | GASKET, Oil Pump to Crankcase - - - - - | 1 | |
| 36 | PIN-949 | PIN, Pump Alignment - - - - - | 2 | |
| 37 | SEL-94 | SEAL, Crankshaft - - - - - | 1 | |
| 38 | KEY-34 | KEY, Drive Gear to Crankshaft - - - - - | 1 | |
| 39 | RNG-1323 | RING - "O" (Parco PRP-568-012) - - - - - | 1 | |

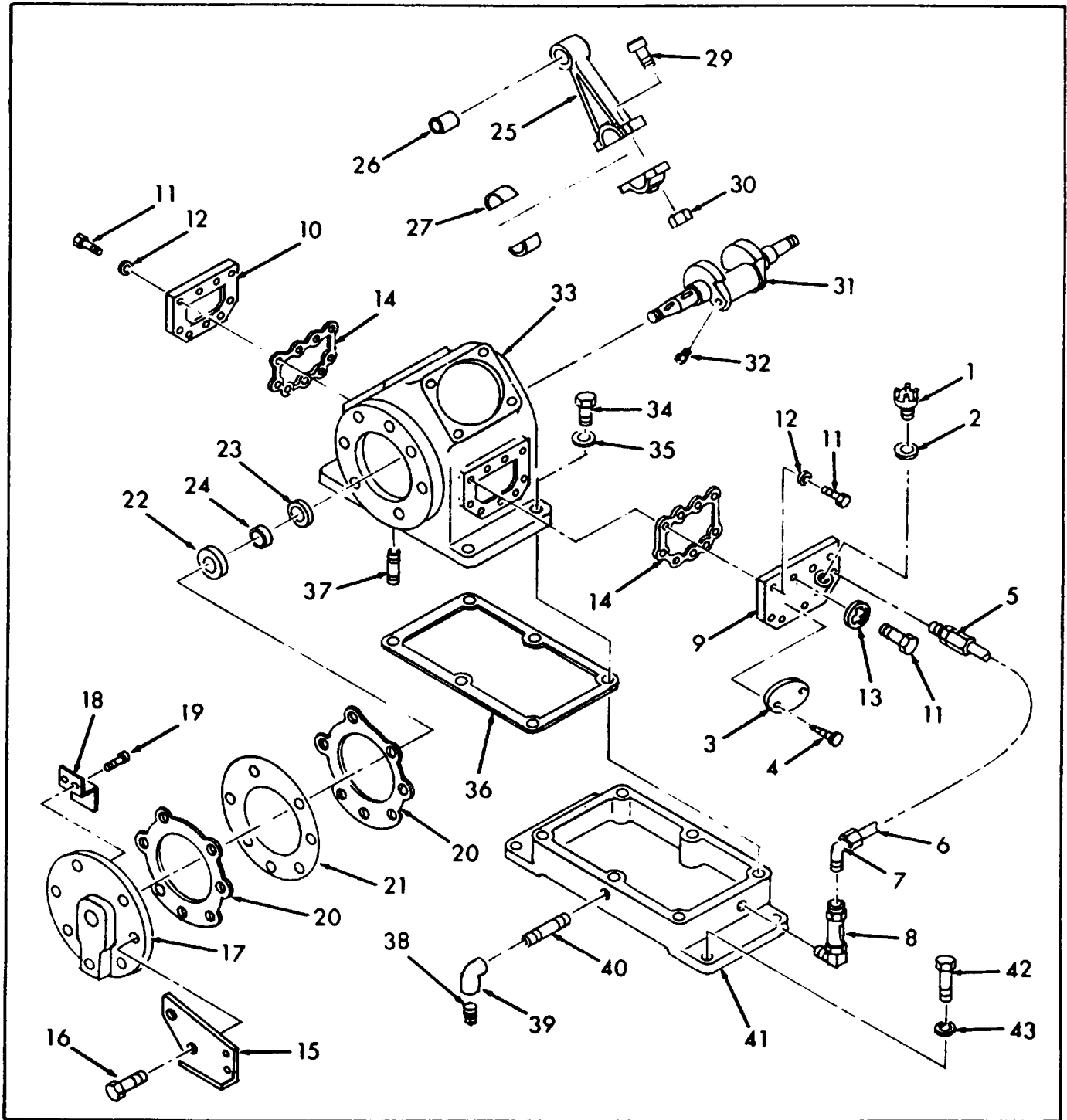


Figure 15. Crankcase Group

| Key No. | Part No. | Description | Qty. | Code |
|---------|----------|---------------------------------------|------|------|
| 15- | | CRANKCASE GROUP | | |
| 1 | PLU-679 | PLUG, Oil Filler - - - - - | 1 | |
| 2 | GKT-865 | GASKET, Oil Filler, Leather - - - - - | 1 | |
| 3 | PLT-254 | PLATE, Identification - - - - - | 1 | |
| | | (ATTACHING PARTS) | | |

Type H

Crankcase

| Key No. | Part No. | Description | Qty. | Code |
|---------|-----------|--|------|------|
| 15- | | CRANKCASE GROUP (Con't.) | | |
| 4 | SCR-951 | SCREW, #6 x 3/16 Long, Drive - - - - - | 2 | |
| | | ---*--- | | |
| 5 | CON-351 | CONNECTOR, 1/8 NPT x 1/4 ODT - Male - - - - - | 1 | |
| 6 | TUB-5835 | TUBE, Gage to Filler Cover - - - - - | 1 | |
| 7 | ELL-1363 | ELBOW, 1/8 NPT x 1/4 ODT - 90° Male - - - - - | 1 | |
| 8 | GAG-366A | GAGE, Oil Level - - - - - | 1 | |
| 9 | COV-1064 | SIDE COVER, Oil Filler - - - - - | 1 | |
| 10 | COV-700 | SIDE COVER, Plain - - - - - | 1 | |
| | | (ATTACHING PARTS) | | |
| 11 | SCR-1202 | SCREW, 3/8-16 x 1" Long, Hex Head - - - - - | 18 | |
| 12 | WAS-544 | WASHER, 3/8 Lock - - - - - | 17 | |
| 13 | WAS-463 | WASHER, 3/8 Lock, Internal Spline - - - - - | 1 | |
| | | ---*--- | | |
| 14 | GKT-2488 | GASKET, Side Covers - - - - - | 2 | |
| 15 | SUP-1294 | SUPPORT, Oil Filter - - - - - | 1 | |
| | HUS-295A | HOUSING ASSEMBLY, Bearing - - - - - | 1 | |
| | | (ATTACHING PARTS) | | |
| 16 | SCR-1819 | SCREW, 1/2-13 x 7/8 Long, Hex Head - - - - - | 6 | |
| | | ---*--- | | |
| 17 | HUS-295 | .HOUSING, Bearing - - - - - | 1 | |
| 18 | BAF-298 | .BAFFLE - - - - - | 1 | |
| 19 | SCR-997 | .SCREW, #6 x 5/16 Long, Drive - - - - - | 2 | |
| 20 | GKT-2858 | GASKET, Bearing Housing - - - - - | 2 | |
| 21 | SHM-222 | SHIM, .005 Thk - - - - - | 5 | |
| 22 | KOS-144 | SEAL ("Garlock Klosure" #63 x 439) - - - - - | 1 | |
| 23 | CUP-14525 | CUP, Bearing - - - - - | 2 | |
| 24 | CNE-14585 | CONE, Bearing - - - - - | 2 | |
| 25 | ROD-870A | CONNECTING ROD ASSEMBLY (Use 1 on SBB and SBBS) | 2 | |
| | ROD-835A | CONNECTING ROD ASSEMBLY (Use only on SBB and SBBS) | 1 | 3 |
| 26 | BUS-942 | .BUSHING, Wrist Pin (Use on ROD-870A) - - - - - | 2 | |
| | BRG-623 | .BEARING, Needle (Use on ROD-835A) - - - - - | 1 | |
| 27 | BRG-648 | .BEARING INSERT - - - - - | 4 | |
| 28 | SCR-2227 | .SCREW, Connecting Rod - - - - - | 2 | |
| 29 | SCR-1727 | .SCREW, Connecting Rod - - - - - | 2 | |
| | | Use on COM Ser # SA up to 199 only | | |
| 30 | NUT-1346 | .NUT, 3/8-24 ESNA #52N1610-064 - - - - - | 2 | |
| 31 | CKS-210 | CRANKSHAFT - - - - - | 1 | |
| 32 | PLU-501 | .PLUG, 1/8 NPT Square Head - - - - - | 1 | |
| 33 | OCS-228 | CRANKCASE - - - - - | 1 | |
| | | (ATTACHING PARTS) | | |
| 34 | SCR-1936 | SCREW, 5/8-11 x 1-1/2 Long, Hex Head - - - - - | 6 | |
| 35 | WAS-548 | WASHER, 5/8 Lock - - - - - | 6 | |
| | | ---*--- | | |
| 36 | GKT-2738 | GASKET, Crankcase to Sump - - - - - | 1 | |
| 37 | NIP-1650 | NIPPLE, 1/2 NPT x 2-1/4 Long - - - - - | 1 | |
| 38 | PLU-512 | PLUG, 1/2 NPT Square Head - - - - - | 1 | |
| 39 | ELL-527 | ELBOW, 1/2 NPT x 90° - - - - - | 1 | |
| 40 | NIP-614 | NIPPLE, 1/2 NPT x 3" Long - - - - - | 1 | |
| 41 | SUM-27 | SUMP, Oil - - - - - | 1 | |
| | | (ATTACHING PARTS) | | |
| 42 | SCR-1393 | SCREW, 5/8-11 x 1-5/8 Long, Hex Head - - - - - | 4 | |
| 43 | WAS-515 | WASHER, 5/8 Lock - - - - - | 4 | |

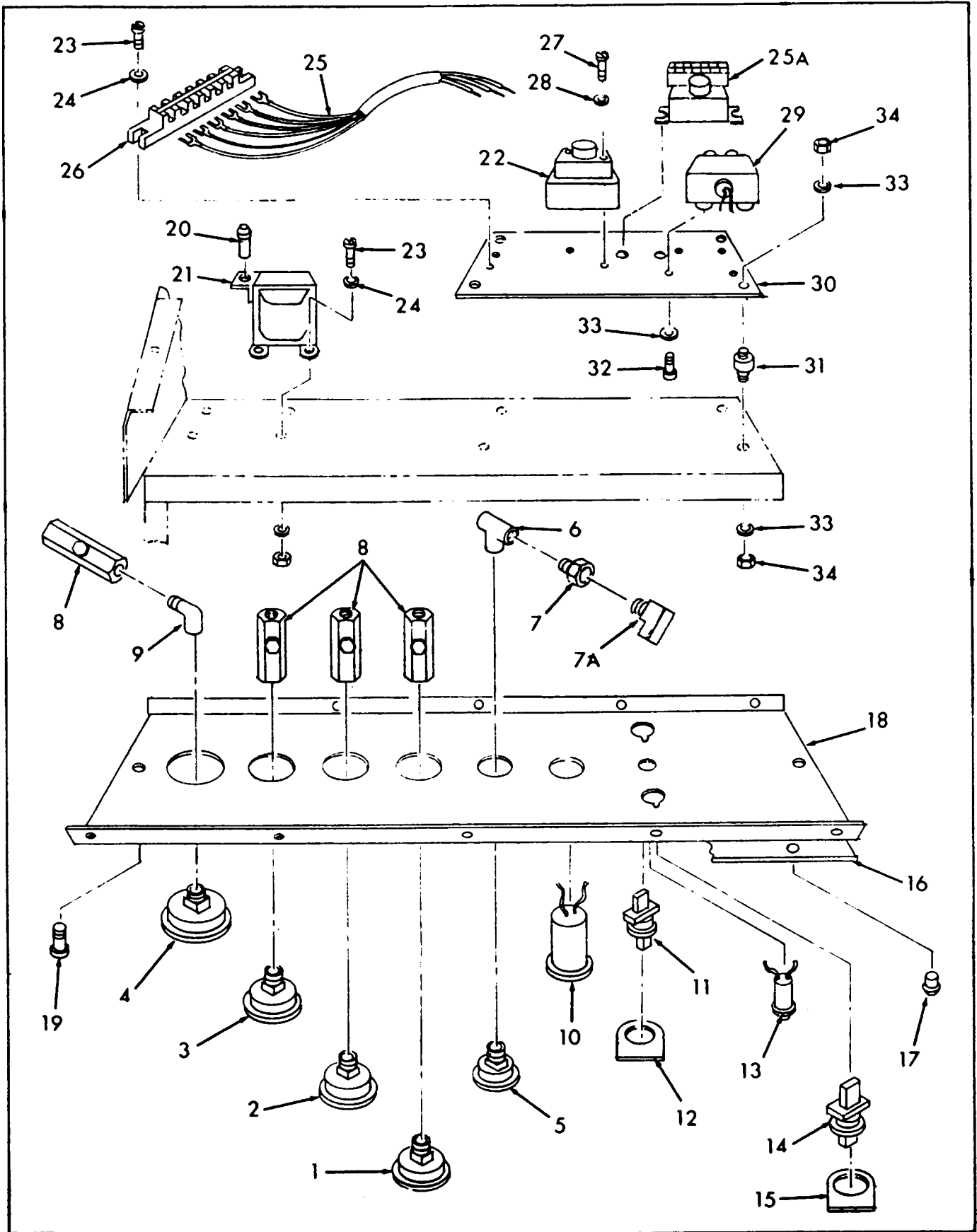


Figure 16. Instrument Panel Group

Type H

Instruments

| Key No. | Part No. | Description | Qty. | Code |
|---------|-----------|---|------|-------|
| 16- | | INSTRUMENT PANEL GROUP | | |
| 1 | GAG-370 | PRESSURE GAGE, 1st Stage - - - - - | 1 | 1,2,3 |
| 2 | GAG-371 | PRESSURE GAGE, 2nd Stage - - - - - | 1 | 1,2 |
| | GAG-372 | PRESSURE GAGE, 2nd Stage - - - - - | 1 | 3 |
| 3 | GAG-373 | PRESSURE GAGE, 3rd Stage - - - - - | 1 | 1,2 |
| | GAG-139 | PRESSURE GAGE, 3rd Stage - - - - - | 1 | 3 |
| 4 | GAG-375 | PRESSURE GAGE, 4th Stage - - - - - | 1 | 1,2 |
| | PLT-4551 | PLATE, Hole Cover - - - - - | 1 | 3 |
| 5 | GAG-436 | PRESSURE GAGE, Oil - - - - - | 1 | 1,2,3 |
| 6 | TEE-511 | TEE, 1/4 NPT - - - - - | 1 | 1,2,3 |
| 7 | BUS-502 | BUSHING, 1/4 x 1/8 NPT - - - - - | 1 | 1,2,3 |
| 7A | SWT-255 | SWITCH, Low Oil Shut Down - - - - - | 1 | 1,2,3 |
| 8 | VAL-1693 | VALVE, Needle (Use 3 on SBB) - - - - - | 4 | 1,2,3 |
| 9 | ELL-1396 | ELBOW, 1/4 NPT x 90° Street - - - - - | 1 | 1,2 |
| 10 | GAG-203 | GAGE, Hourmeter - - - - - | 1 | 1,2,3 |
| 11 | SWT-303 | SWITCH, 3 Position Selector - - - - - | 1 | 1,2,3 |
| 12 | PLT-4426 | PLATE, Switch "Hand-Off-Auto" - - - - - | 1 | 1,2,3 |
| 13 | LMP-25 | INDICATOR LAMP, Power On - - - - - | 1 | 1,2,3 |
| 14 | SWT-283 | SWITCH, 2 Position Selector - - - - - | 1 | 1,2,3 |
| 15 | PLT-4425 | PLATE, Switch "Open-Close" - - - - - | 1 | 1,2,3 |
| 16 | PLT-4398 | NAMEPLATE, Instrument Panel - - - - - | 1 | 1,2,3 |
| | | (ATTACHING PARTS) | | |
| 17 | RIV-584 | RIVET, 1/8 x 7/32 Long, Drive - - - - - | 8 | 1,2,3 |
| | | ----*---- | | |
| 18 | PNL-3504A | PANEL, Gage - - - - - | 1 | 1,2,3 |
| | | (ATTACHING PARTS) | | |
| 19 | SCR-1828 | SCREW, #10-24 x 3/8 Long - - - - - | 7 | 1,2,3 |
| | | ----*---- | | |
| 20 | FUS-17 | FUSE, 1.0 Amp 150 Volt (Bussman Type MDL) - - - - - | 1 | 1,2,3 |
| 21 | TRR-31 | TRANSFORMER, 100 VA - - - - - | 1 | 1,2,3 |
| 22 | TMR-10 | TIMER, Cycling - - - - - | 1 | 1,2,3 |
| | | (ATTACHING PARTS) | | |
| 23 | SCR-1938 | SCREW, #10-32 x 3/8 Long, Rd. Hd. - - - - - | 8 | 1,2,3 |
| 24 | WAS-541 | WASHER, #10 Lock - - - - - | 8 | 1,2,3 |
| | | ----*---- | | |
| 25 | HNS-109 | HARNESS, Wiring - - - - - | 1 | 1,2,3 |
| 25A | TMR-16 | TIMER, Time Delay - - - - - | 1 | |
| 26 | BLK-359 | TERMINAL BLOCK, 6 Point - - - - - | 1 | 1,2,3 |
| | | (ATTACHING PARTS) | | |
| 27 | SCR-1933 | SCREW, #6-32 x 1-3/4 Long, Rd. Hd. - - - - - | 2 | 1,2,3 |
| 28 | WAS-788 | WASHER, #6 Lock - - - - - | 2 | 1,2,3 |
| | | ----*---- | | |
| 29 | SWT-178 | SWITCH, Pressure - - - - - | 1 | 1,2,3 |
| 30 | PLT-4432 | PLATE, Electrical Components - - - - - | 1 | 1,2,3 |
| 31 | RUB-5 | VIBRATION ISOLATOR - - - - - | 4 | 1,2,3 |
| | | (ATTACHING PARTS) | | |
| 32 | SCR-2102 | SCREW, 1/4-20 x 1/2 Long, Hex Head - - - - - | 4 | 1,2,3 |
| 33 | WAS-542 | WASHER, 1/4 Lock - - - - - | 12 | 1,2,3 |
| 34 | NUT-830 | NUT, 1/4-20 Hex - - - - - | 8 | 1,2,3 |
| | | ----*---- | | |

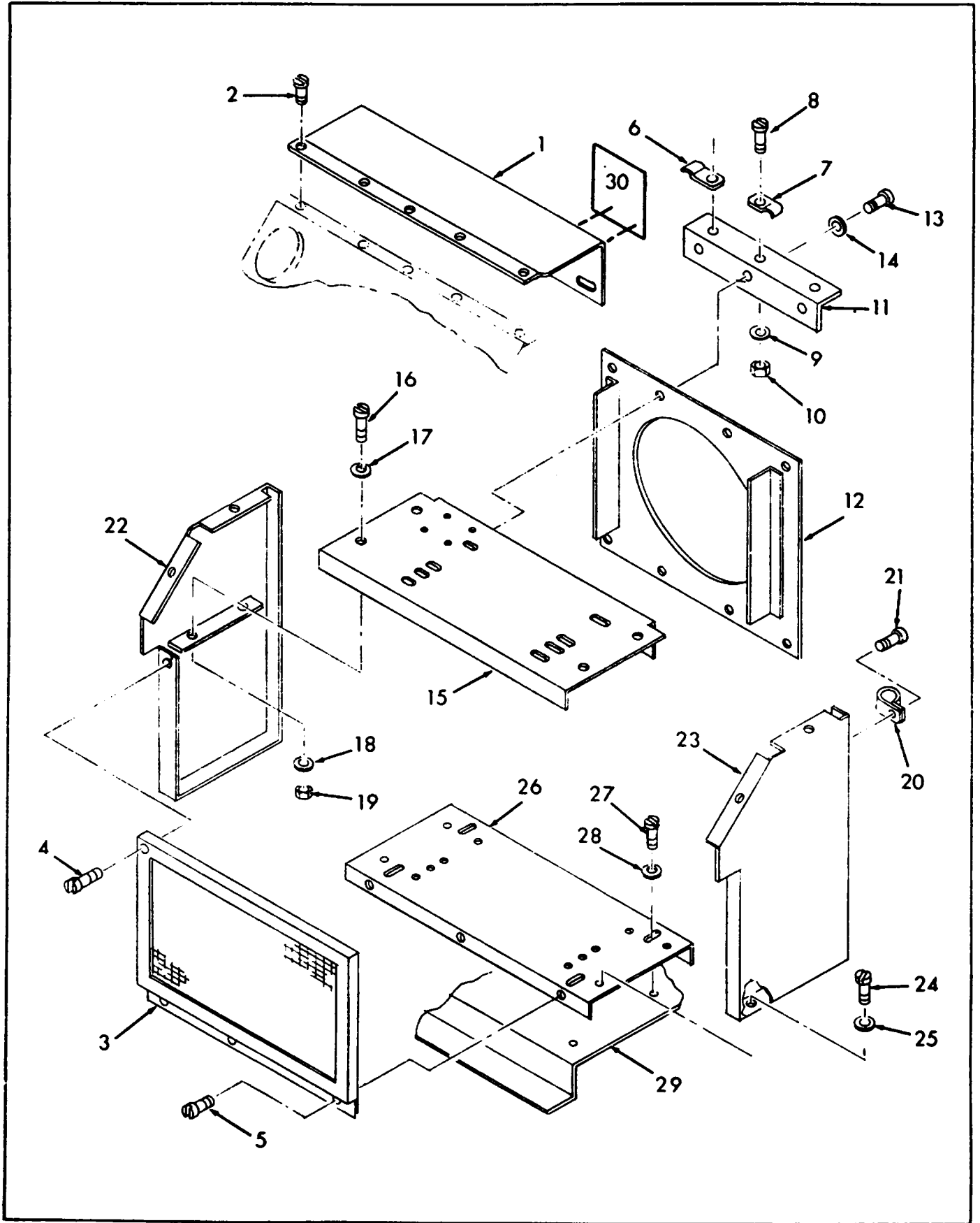


Figure 17. Frame Group

Type H

Frame

| Key No. | Part No. | Description | Qty. | Code |
|---------|-----------|--|------|-------|
| 17- | | FRAME GROUP | | |
| 1 | PNL-3503 | PANEL, Back Cover - - - - - | 1 | 1,2,3 |
| | | (ATTACHING PARTS) | | |
| 2 | SCR-1828 | SCREW, #10-24 x 3/8 Long, Hex Head SEMS - - - - - | 7 | 1,2,3 |
| | | ----*---- | | |
| 3 | GRL-271 | GRILLE, Cooler - - - - - | 1 | 1,2,3 |
| | | (ATTACHING PARTS) | | |
| 4 | SCR-2026 | SCREW, 1/4-20 x 1" Long, "Taplite" Hex Head - - - - - | 2 | 1,2,3 |
| 5 | SCR-2027 | SCREW, 1/4-20 x 1/2 Long, "Taplite" Hex Head - - - - - | 3 | 1,2,3 |
| | | ----*---- | | |
| 6 | CLP-67 | CLIP, 1/4 OD Tube - - - - - | 5 | 1,2,3 |
| 7 | CLP-326 | CLIP, 1/8 OD Tube - - - - - | 4 | 1,2,3 |
| | CLP-266 | CLIP, 3/8 OD Tube - - - - - | 1 | 1,2,3 |
| | | (ATTACHING PARTS) | | |
| 8 | SCR-510 | SCREW, #8-32 x 3/8 Long, Rd. Hd. - - - - - | 10 | 1,2,3 |
| 9 | WAS-540 | WASHER, #8 Lock - - - - - | 10 | 1,2,3 |
| 10 | NUT-829 | NUT, #8-32 Hex. - - - - - | 6 | 1,2,3 |
| | | ----*---- | | |
| 11 | ANG-3553 | ANGLE, Tube Support - - - - - | 1 | 1,2,3 |
| 12 | SHR-90 | SHROUD, Cooling Fan - - - - - | 1 | |
| | | (ATTACHING PARTS) | | |
| 13 | SCR-1532 | SCREW, 1/4-20 x 1/2 Long, Hex Head - - - - - | 8 | |
| 14 | WAS-542 | WASHER, 1/4 Lock - - - - - | 8 | |
| | | ----*---- | | |
| 15 | PLT-4387A | PLATE, Cooler Top - - - - - | 1 | |
| | | (ATTACHING PARTS) | | |
| 16 | SCR-1200 | SCREW, 1/4-20 x 3/4 Long, Hex Head - - - - - | 4 | |
| 17 | WAS-583 | WASHER, 1/4 Flat - - - - - | 4 | |
| 18 | WAS-542 | WASHER, 1/4 Lock - - - - - | 4 | |
| 19 | NUT-830 | NUT, 1/4-20 Hex - - - - - | 4 | |
| | | ----*---- | | |
| 20 | CMP-198 | CLAMP, Wire (Tinnerman #C3125-1-30) - - - - - | 3 | 1,2,3 |
| | | (ATTACHING PARTS) | | |
| 21 | SCR-564 | SCREW, #10-32 x 3/8 Long, Rd. Hd. - - - - - | 3 | 1,2,3 |
| | WAS-541 | WASHER, #10 Lock - - - - - | 3 | 1,2,3 |
| | NUT-508 | NUT, #10-32 Hex - - - - - | 3 | 1,2,3 |
| | | ----*---- | | |
| 22 | SUP-2366A | SUPPORT, Cooler, L.H. - - - - - | 1 | 1,2,3 |
| 23 | SUP-2365A | SUPPORT, Cooler, R.H. - - - - - | 1 | 1,2,3 |
| | | (ATTACHING PARTS) | | |
| 24 | SCR-1532 | SCREW, 1/4-20 x 1/2 Long, Hex Head - - - - - | 4 | |
| 25 | WAS-542 | WASHER, 1/4 Lock - - - - - | 4 | |
| | | ----*---- | | |
| 26 | PLT-4385A | PLATE, Cooler Bottom - - - - - | 1 | |
| | | (ATTACHING PARTS) | | |
| 27 | SCR-1333 | SCREW, 3/8-16 x 1-1/4 Long, Hex Head - - - - - | 4 | |
| 28 | WAS-505 | WASHER, 3/8 Lock - - - - - | 4 | |
| | | ----*---- | | |
| 29 | BAS-939 | BASE - - - - - | 1 | |
| 30 | DCM-170 | DECAL, Wiring Diagram - - - - - | 1 | |
| | PAT-80 | PAINT, Grey Metallic, 12 oz Spray Can | | |

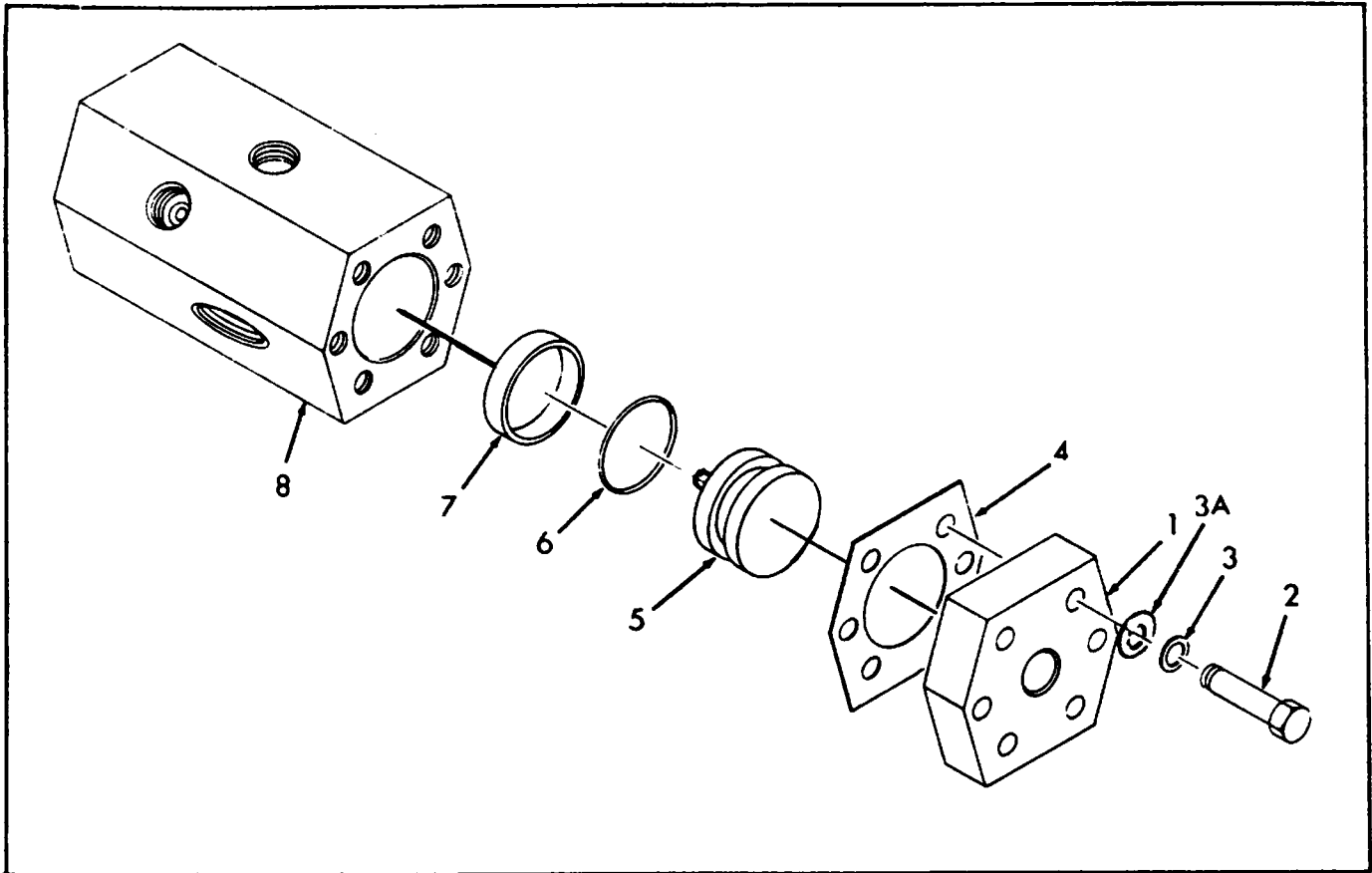


Figure 18. Valve Assembly, Unloader

| Key No. | Part No. | Description | Qty. | Code |
|---------|-----------|---|------|-------|
| 18- | VAL-1644 | VALVE ASSEMBLY, Unloader (See Figure 11) | 1 | 1,2,3 |
| 1 | COV-972 | .COVER, Unloader Valve (ATTACHING PARTS) | 1 | |
| 2 | SCR-2106 | .SCREW, 1/4-20 x 1" Long, Hex Head | 6 | |
| 3 | WAS-542 | .WASHER, 1/4 Lock | 6 | |
| 3A | WAS-884 | .WASHER, 11/16 O.D. x 1/4 I.D. Flat, Hardened | | |
| 4 | *GKT-2653 | .GASKET, Unloader Valve | 1 | |
| 5 | *PST-438A | .PISTON ASSEMBLY | 1 | |
| 6 | *RNG-2040 | ."0" RING | 1 | |
| 7 | *RNG-1690 | .RING, Slipper Seal | 1 | |
| 8 | BOD-253 | .BODY, Unloader Valve | 1 | |
| | *KIT-1432 | KIT, Unloader Valve Repair. Contains preassembled piston and two rings, and gasket. | | |

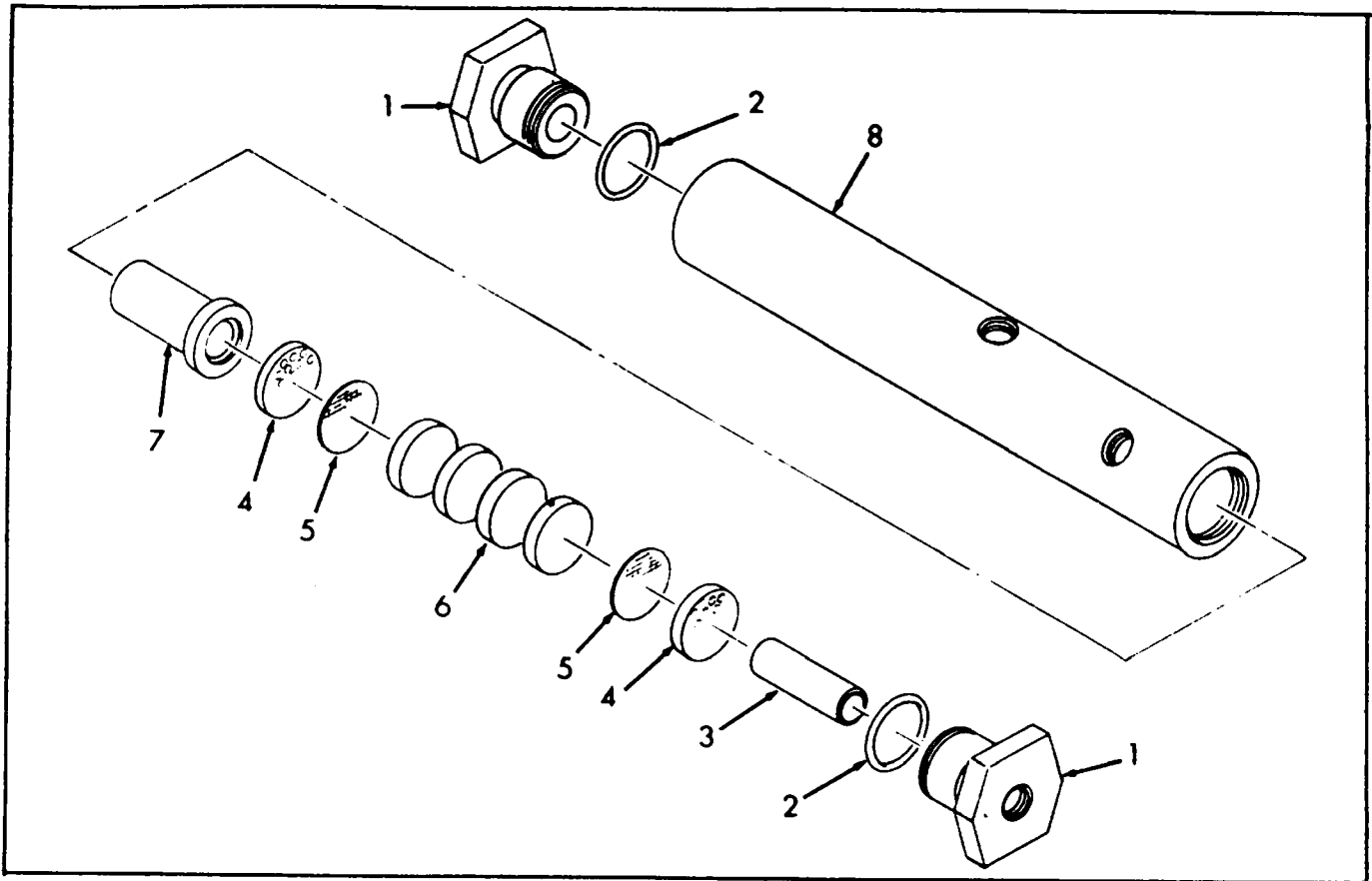


Figure 19. Separator Assembly

| Key No. | Part No. | Description | Qty. | Code |
|---------|-----------|--------------------|------|-------|
| 19- | SEP-109 | SEPARATOR ASSEMBLY | 1 | 1,2,3 |
| 1 | PLU-655 | .PLUG, Body | 2 | |
| 2 | *RNG-2040 | ."O" RING | 2 | |
| 3 | *SPC-321 | .SPACER | 1 | |
| 4 | *DIS-107 | .DISC | 2 | |
| 5 | *SRE-118 | .SCREEN | 2 | |
| 6 | *PAD-747 | .PAD | 4 | |
| 7 | BAF-366 | .BAFFLE | 1 | |
| 8 | BOD-267 | .BODY, Separator | 1 | |

*KIT-1292 KIT, Repair. Kit contains "O" Rings, spacer, discs, screens and pads

LIST OF PARTS

AIR-COOLED COMPRESSORS TYPE-H

MODEL V2A4

**TWO CYLINDER FOUR-STAGE
5000 POUNDS PRESSURE**



WORTHINGTON CORPORATION

General Offices: HARRISON, NEW JERSEY

prepared by

**Construction Equipment Division
Holyoke, Massachusetts**

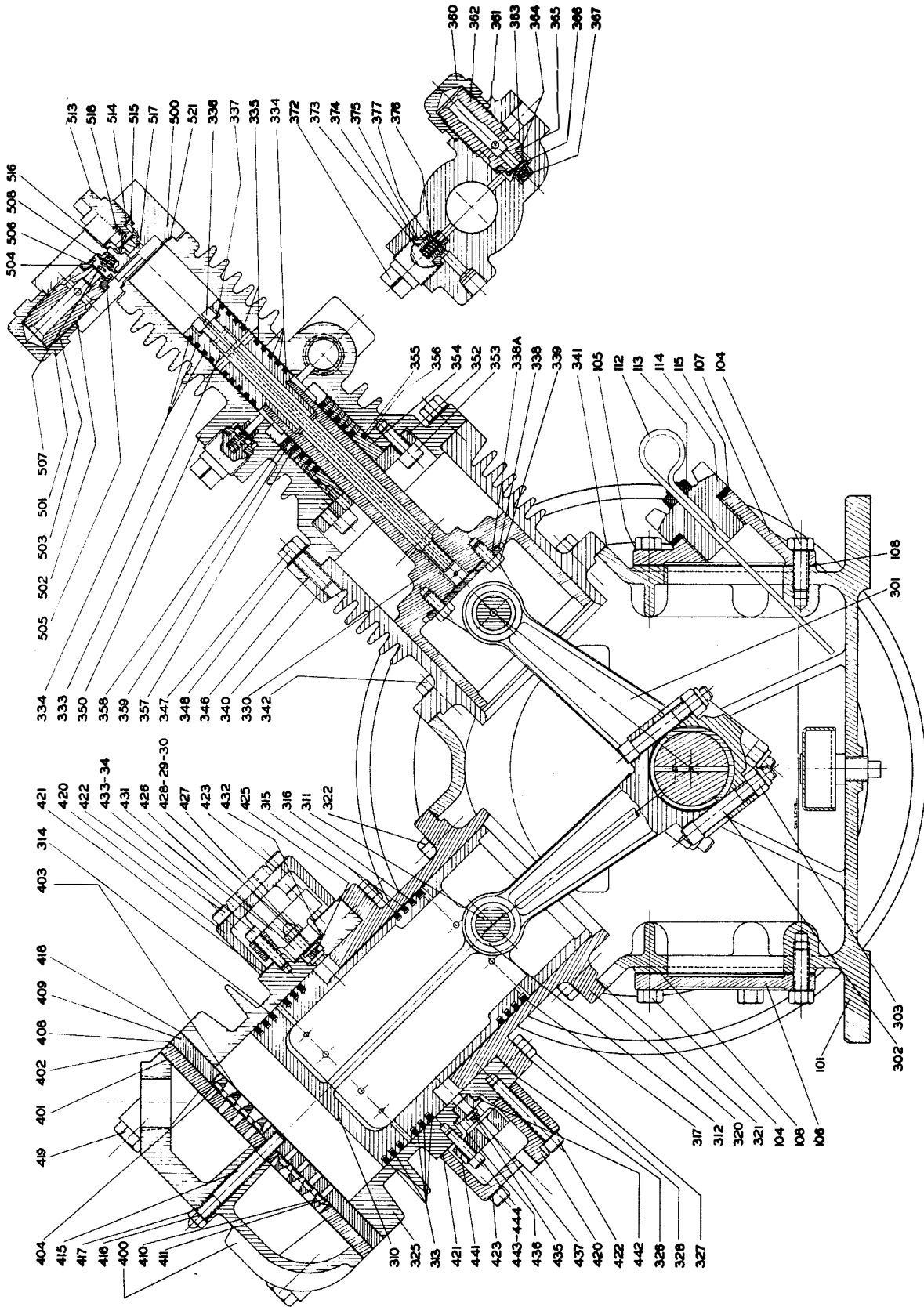


Fig. 1—Cross Sectional View of Compressor

HR-17533-1

COMPRESSOR — LIST OF PARTS

| TYPICAL SERIAL NUMBER | | | | 711-00010 | | | |
|-----------------------|---|----------|-----------|--|---|----------|-----------|
| COMPRESSOR BORES | | | | 4 $\frac{1}{2}$ "/4 $\frac{1}{8}$ "-3 $\frac{3}{4}$ "/1 $\frac{1}{4}$ "/1 $\frac{1}{8}$ "-1 $\frac{1}{16}$ " | | | |
| COMPRESSOR STROKE | | | | X 2 $\frac{1}{2}$ " | | | |
| Ref. No. | Name of Part | No. Req. | Part No. | Ref. No. | Name of Part | No. Req. | Part No. |
| 100 | Crankcase Assembly (Ref. 101-102) | 1 | CCS-172A | 238 | Coupling, Compression—Oil Pump Tube | 2 | CPL-612 |
| 101 | •Crankcase | 1 | CCS-172 | 239 | Bushing, Reducing | 2 | BUS-505 |
| 102 | •Cup, Bearing, Timken | 1 | CUP-14525 | 240 | Elbow, Oil Filter | 2 | ELL-652 |
| 103 | Seal, Crankshaft Oil | 1 | KOS-144 | 250A | Fan Group | 1 | |
| 104 | Screw, Crankcase Side Covers | 18 | SCR-1202 | 250 | •Fan, Cooling | 1 | FAN-27 |
| 105 | Washer, Crankcase Side Cover | | | 251 | •Screw, Fan to Hub | 4 | SCR-1830 |
| | Screw Lockwasher | 18 | WAS-544 | 252 | •Washer, Fan to Hub Screw | 4 | WAS-543 |
| 106 | Cover, Plain Side | 1 | COV-700 | 253 | •Hub, Fan | 1 | HUB-209 |
| 107 | Cover, Oil Filler | 1 | COV-701 | 254 | •Nut, Lock, Fan and Hub to Crankshaft | 1 | NUT-1298 |
| 108 | Gasket, Crankcase Side Covers | 2 | GKT-2488 | 255 | •Key, Fan Hub | 1 | KEY-34 |
| 109 | Shim, Bearing Housing | 11 | SHM-129 | 300 | Rod Assembly, Connecting (Ref. 301-306) | 2 | ROD-158A |
| 110 | Screw, Bearing Housing to Crankcase | 6 | SCR-1819 | 301 | •Rod, Connecting | 1 | ROD-158 |
| 111 | Plug, Crankcase Drain | 1 | PLU-509 | 302 | •Screw, Connecting Rod | 2 | SCR-1727 |
| 112 | Stick, Oil | 1 | STC-38 | 303 | •Nut, Connecting Rod | 2 | NUT-1346 |
| 113 | Gasket, Oil Stick | 1 | GKT-1197 | 304 | •Bushing, Wrist Pin—(Service) | 1 | BUS-159 |
| 114 | Plug, Oil Stick | 1 | PLU-88 | 305 | •Bearing, Insert—(Upper) | 1 | BRG-455 |
| 115 | Gasket, Oil Stick Plug | 1 | GKT-865 | 306 | •Bearing, Insert—(Lower) | 1 | BRG-454 |
| 116A | Housing Assembly, Bearing (Ref. 116-117) | 1 | HUS-162B | 308 | Bearing Set (2 Each of Ref. 305 & 306) | 1 | KIT-683 |
| 116 | •Housing, Bearing | 1 | HUS-162A | 310A | Piston W/Pin (1st & 2nd Stage) (Ref. 310-311) | 1 | PST-380A |
| 117 | •Cup, Bearing, Timken | 1 | CUP-14525 | †310 | •Piston | 1 | PST-380 |
| 120 | Strainer Assembly, Oil | 1 | SRA-104 | 311 | •Pin, Piston Wrist | 1 | PIN-99 |
| 121 | Ring "O." Oil Suction Tube | 1 | RNG-1323 | 312 | Spring, Wristpin Lock Ring | 2 | SPG-217 |
| 122 | Screw, Oil Strainer to Crankcase | 2 | SCR-560 | 313A | Ring Kit (Ref. 313-317) | 1 | KIT-713 |
| 123 | Washer, Oil Strainer to Crankcase Screw | 2 | WAS-503 | 313 | Ring, Compression 4 $\frac{1}{8}$ " x $\frac{1}{8}$ " | 5 | RNG-1449 |
| 124 | Gasket, Oil Strainer | 1 | GKT-649 | 314 | Ring, Compression 4 $\frac{1}{8}$ " x $\frac{1}{8}$ " (Grooved) | 1 | RNG-1450 |
| 126A | Crankshaft Assembly (Ref. 126-127) | 1 | CKS-210A | 315 | Ring, Compression 3 $\frac{3}{4}$ " x $\frac{1}{8}$ " | 2 | RNG-1451 |
| 126 | •Crankshaft | 1 | CKS-210 | 316 | Ring, Compression 3 $\frac{3}{4}$ " x $\frac{1}{8}$ " (Grooved) | 1 | RNG-1452 |
| 127 | •Cone, Bearing, Timken | 2 | CNE-14585 | 317 | Ring, Oil 3 $\frac{3}{4}$ " x $\frac{3}{16}$ " | 1 | RNG-1453 |
| *131 | Nameplate, Serial Number | 1 | PLT-254 | 320 | Cylinder, Lower, (First & Second Stage) | 1 | CYL-343 |
| *132 | Screw, Drive—Nameplate | 2 | SCR-951 | 321 | Gasket, Cylinder to Crankcase | 1 | GKT-2807 |
| 175 | Sheave, Compressor | 1 | SHE-486 | 322 | Screw, Cylinder to Crankcase | 4 | SCR-1837 |
| 176 | Key, Compressor Sheave | 1 | KEY-40 | 325 | Cylinder, Upper (First & Second Stage) | 1 | CYL-213 |
| 177 | Nut, Compressor Sheave Lock | 1 | NUT-811 | 326 | Gasket, Cylinder to Cylinder | 1 | GKT-2553 |
| 200 | Pump Assembly, Oil (Ref. 201-217) | 1 | PMP-248 | 327 | Screw, Cylinder to Cylinder | 6 | SCR-1202 |
| 201A | Body Assembly (Ref. 201-202) | 1 | BOD-240A | 328 | Washer, Lock, Cylinder to Cylinder | 6 | WAS-544 |
| 201 | •Body | 1 | BOD-240 | 330A | Piston Assembly—Crosshead (Ref. 330-331) | 1 | PST-417A |
| 202 | •Seal, Oil, Shaft | 1 | SEL-94 | †330 | •Piston | 1 | PST-417 |
| 203 | Gasket, Oil Pump Body to Housing | 1 | GKT-2492 | 331 | •Pin, Piston Wrist | 1 | PIN-98A |
| *204 | Pin, Alignment—Pump Body to Housing | 2 | PIN-168 | 332 | Spring, Wristpin Lock Ring | 2 | SPG-217 |
| 205 | Gear, Driver | 1 | GER-83 | 333 | Piston | 1 | PST-418 |
| 206A | Gear Assembly, Driven (Ref. 206-207) | 1 | GER-84A | 334A | Ring Set, (Ref. 334-335) | 1 | KIT-1322 |
| †206 | •Gear | 1 | GER-84 | 334 | •Ring, Compression (2 Pieces) | 7 | RNG-271 |
| †207 | •Bushing, Gear | 1 | BUS-198 | 335 | •Ring, Oil | 2 | RNG-1657 |
| 208 | Shaft, Driven Gear | 1 | SHF-259 | 336 | Screw, Piston | 1 | SCR-1913 |
| 209 | Key, Driven Gear to Crankshaft | 1 | KEY-34 | 337 | Gasket, Piston Screw | 1 | GKT-274 2 |
| 210 | Screw, Oil Pump Body to Housing | 10 | SCR-1202 | 338 | Plate, Piston Screw | 1 | PLT-2696 |
| 211 | Washer, Lock | 10 | WAS-544 | 338A | Gasket—Plate | 1 | GKT-2649 |
| 212A | Valve, Oil Pressure Adjusting (Ref. 212-217) | | | 339 | Screw, Plate to Piston | 2 | SCR-1823 |
| 212 | •Cap, Adjusting Screw | 1 | CAP-25 | 340 | Cylinder, Guide—Lower (3rd & 4th Stage) | 1 | CYL-170 |
| 213 | •Gasket, Jam Nut | 2 | GKT-602 | 341 | Gasket, Cylinder to Crankcase | 1 | GKT-2807 |
| 214 | •Nut, Adjusting Screw Jam | 1 | NUT-693 | 342 | Screw, Cylinder to Crankcase | 4 | SCR-1837 |
| 215 | •Screw, Pressure Adjusting | 1 | SCR-1820 | 346 | Gasket, Cylinder to Cylinder | 1 | GKT-2051 |
| 216 | •Spring, Pressure Adjusting | 1 | SPG-139 | 347 | Screw, Cylinder to Cylinder | 6 | SCR-1202 |
| 217 | •Poppet, Pressure Adjusting | 1 | POP-2 | 348 | Washer, Cylinder to Cylinder Screw | 6 | WAS-544 |
| *220 | Filter, Oil | 1 | FLR-296 | | | | |
| 235 | Support, Oil Filter | 1 | SUP-1294 | | | | |
| 236 | Tube, Oil Filter Discharge | 1 | TUB-3501 | | | | |
| 237 | Tube, Oil Pump to Oil Filter | 1 | TUB-3500 | | | | |

*Not Illustrated
†Not Serviced Separately

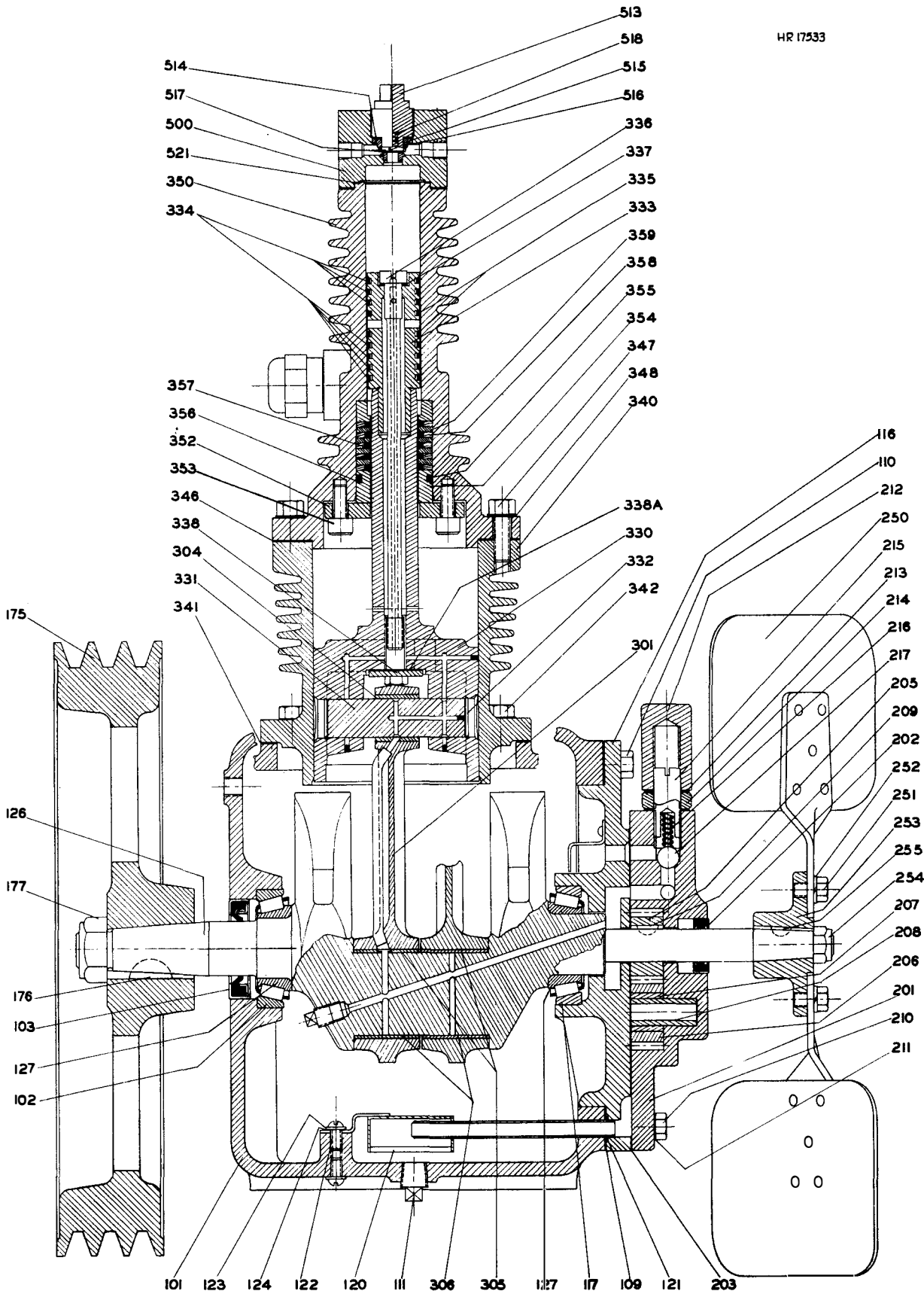


Fig. 2—Cross Sectional View of Compressor

COMPRESSOR – LIST OF PARTS

| TYPICAL SERIAL NUMBER | | | | 711-00010 | | | |
|-----------------------|---|----------|----------|--|---|----------|----------|
| COMPRESSOR BORES | | | | 4 $\frac{1}{2}$ // 4 $\frac{3}{8}$ -3 $\frac{3}{4}$ // 1 $\frac{1}{4}$ // 1 $\frac{1}{4}$ -1 $\frac{1}{8}$ | | | |
| COMPRESSOR STROKE | | | | X 2 $\frac{1}{2}$ | | | |
| Ref. No. | Name of Part | No. Req. | Part No. | Ref. No. | Name of Part | No. Req. | Part No. |
| 350A | Cylinder Assembly, Upper (3rd & 4th Stage) (Ref. 350-377) | 1 | CYL-363A | 425A | Valve Assembly, Second Stage Suction (Ref. 425-430) | 1 | VAL-166A |
| 350 | •Cylinder W/Bushing | 1 | CYL-363 | 425 | •Guard, Valve, Second Stage Suction | 1 | GRD-385A |
| 352 | •Plate, Packing | 1 | PLT-2695 | 426 | •Seat, Valve, Second Stage Suction | 1 | SET-140 |
| 353 | •Screw | 6 | SCR-1822 | 427 | •Strip, Valve, Second Stage Suction | 1 | STR-15 |
| 354 | •Spacer | 1 | SPC-306 | 428 | •Screw, Valve Guard, Second Stage Suction | 2 | SCR-1670 |
| 355 | •Ring, "O" | 1 | RNG-1377 | 429 | •Nut, Acorn, Valve Guard Screw | 2 | NUT-948 |
| 356 | •Ring, "O," Backup | 1 | RNG-1457 | 430 | •Washer, Valve Guard Screw | 2 | WAS-27 |
| 357 | •Ring, Contracting (2 Piece) | 5 | RNG-1441 | 431 | Plate, Valve, Second Stage Suction | 1 | PLT-2311 |
| 358 | •Ring, Backing | 5 | RNG-1326 | 432 | Gasket, Seat to Cylinder | 1 | GKT-2491 |
| 359 | •Spacer, Ring | 4 | SPC-237 | 433 | Screw, Plate to Cylinder | 4 | SCR-939 |
| 360A | •Valve Group, Suction (Ref. 360-367) | 1 | KIT-1229 | 434 | Washer, Lock, Plate to Cylinder Screw | 4 | WAS-503 |
| 360 | ••Cap, Suction Plug | 1 | CAP-5 | 435A | Valve Assembly, Second Stage Discharge (Ref. 435-440) | 1 | VAL-167A |
| 361 | ••Gasket, Suction Valve Cap | 1 | GKT-582 | 435 | •Guard, Valve, Second Stage Discharge | 1 | GRD-453A |
| 362 | ••Plug, Suction Valve | 1 | PLU-76 | 436 | •Seat, Valve, Second Stage Discharge | 1 | SET-141 |
| 363 | ••Gasket, Plug to Guide | 1 | GKT-614 | 437 | •Strip, Valve, Second Stage Discharge | 1 | STR-15 |
| 364 | ••Guide, Suction Valve | 1 | GDE-6 | *438 | •Screw, Valve, Guard, Second Stage Discharge | 2 | SCR-1670 |
| 365 | ••Gasket, Guide to Cylinder | 1 | GKT-614 | *439 | •Nut, Acorn, Valve Guard Screw | 2 | NUT-948 |
| 366 | ••Disc, Suction Valve | 1 | DIS-104 | *440 | •Washer, Valve Guard Screw | 2 | WAS-27 |
| 367 | ••Spring, Suction Valve | 1 | SPG-420 | 441 | Plate, Valve, Second Stage Discharge | 1 | PLT-2311 |
| 370A | •Valve Group, Discharge (Ref. 372-377) | 1 | KIT-1230 | 442 | Gasket, Seat to Cylinder | 1 | GKT-2491 |
| 372 | ••Plug, Discharge Valve | 1 | PLU-610 | 443 | Screw, Plate to Cylinder | 4 | SCR-939 |
| 373 | ••Gasket, Plug to Guide | 1 | GKT-614 | 444 | Washer, Lock, Plate to Cylinder Screw | 4 | WAS-503 |
| 374 | ••Guide, Discharge Valve | 1 | GDE-6 | 500A | Head Assembly, Third Stage (Ref. 500-518) | 1 | HD-761B |
| 375 | ••Gasket, Guide to Cylinder | 1 | GKT-614 | 500 | •Head, Cylinder | 1 | HD-761A |
| 376 | ••Disc, Discharge Valve | 1 | DIS-104 | 501A | •Valve Group, Suction (Ref. 501-508) | 1 | KIT-1229 |
| 377 | ••Spring, Discharge Valve | 1 | SPG-420 | 501 | ••Cap, Suction Plug | 1 | CAP-5 |
| 400A | Head Assembly, Cylinder, 1st Stage (Ref. 400-417) | 1 | HD-770A | 502 | ••Gasket, Suction Valve Cap | 1 | GKT-582 |
| 400 | •Head, Cylinder | 1 | HD-770 | 503 | ••Plug, Suction Valve | 1 | PLU-76 |
| 401 | •Gasket, Head to Suction Valve | 1 | GKT-2794 | 504 | ••Gasket, Plug to Guide | 1 | GKT-614 |
| 402A | •Valve Assembly, Suction (Ref. 402-407) | 1 | | 505 | ••Guide, Suction Valve | 1 | GDE-6 |
| 402 | ••Plate, Valve, Upper, Suction | 1 | PLT-2071 | 506 | ••Gasket, Guide to Cylinder Head | 1 | GKT-614 |
| 403 | ••Guard, Valve, Suction | 1 | GRD-448A | 507 | ••Disc, Suction Valve | 1 | DIS-104 |
| 404 | ••Strip, Valve, Suction | 8 | STR-117 | 508 | ••Spring, Suction Valve | 1 | SPG-420 |
| *405 | ••Screw, Guard to Plate | 2 | SCR-1189 | 511A | •Valve Group, Discharge (Ref. 513-518) | 1 | KIT-30 |
| *406 | ••Gasket, Guard to Plate Screw | 2 | GKT-593 | 513 | ••Plug, Discharge Valve | 1 | PLU-610 |
| *407 | ••Nut, Guard to Plate Screw | 2 | NUT-544 | 514 | ••Gasket, Plug to Guide | 1 | GKT-614 |
| *408 | •Gasket, Valve Plate to Valve Plate | 1 | GKT-2040 | 515 | ••Guide, Discharge Valve | 1 | GDE-6 |
| 409A | •Valve, Assembly, Discharge (Ref. 409-414) | 1 | | 516 | ••Gasket, Guide to Cylinder Head | 1 | GKT-614 |
| 409 | ••Plate, Valve, Lower, Discharge | 1 | PLT-186 | 517 | ••Disc, Discharge Valve | 1 | DIS-104 |
| 410 | ••Guard, Valve, Discharge | 1 | GRD-447A | 518 | ••Spring, Discharge Valve | 1 | SPG-420 |
| 411 | ••Strip, Valve, Discharge | 8 | STR-117 | 521 | Gasket, Head Assembly to Cylinder | 1 | GKT-628 |
| *412 | ••Screw, Guard to Plate | 2 | SCR-1189 | *522 | Screw, Head Assembly to Upper Cylinder | 4 | SCR-931 |
| *413 | ••Gasket, Guard to Plate Screw | 2 | GKT-593 | 525 | Muffler, Unloader Valve | 1 | MUF-217 |
| *414 | ••Nut, Guard to Plate Screw | 2 | NUT-544 | *526 | Nut, Lock, Unloader Valve Muffler | 1 | NUT-1174 |
| 415 | •Stud, Valve Plates to Head | 2 | STU-0525 | 530 | Valve, Unloader Assembly (Ref. 531-537) | 1 | VAL-1366 |
| 416 | •Gasket, Valve Plates to Head Studs | 2 | GKT-587 | 531 | •Body, Unloader Valve | 1 | BOD-253 |
| 417 | •Nut, Acorn, Stud | 2 | NUT-1175 | 532 | •Piston, Unloader Valve | 1 | PST-438A |
| 418 | Gasket, Head Assembly to Cylinder | 1 | GKT-2052 | 533 | •Ring, "O," Unloader Piston | 1 | RNG-1250 |
| 419 | Screw, Head Assembly to Upper Cylinder | 6 | SCR-1831 | 535 | •Gasket, Unloader Body to Cover | 1 | GKT-2653 |
| 420 | Body, Suction & Discharge Valve (Second Stage) | 2 | BOD-241 | 536 | •Cover, Unloader Valve | 1 | COV-972 |
| 421 | Gasket, Body to Cylinder | 2 | GKT-2490 | 537 | •Screw, Cover & Bracket to Body | 6 | SCR-1824 |
| 422 | Screw, Body to Cylinder | 12 | SCR-1276 | | | | |
| 423 | Washer, Lock, Body to Cylinder Screw | 12 | WAS-543 | | | | |

*Not Illustrated
†Not Serviced Separately

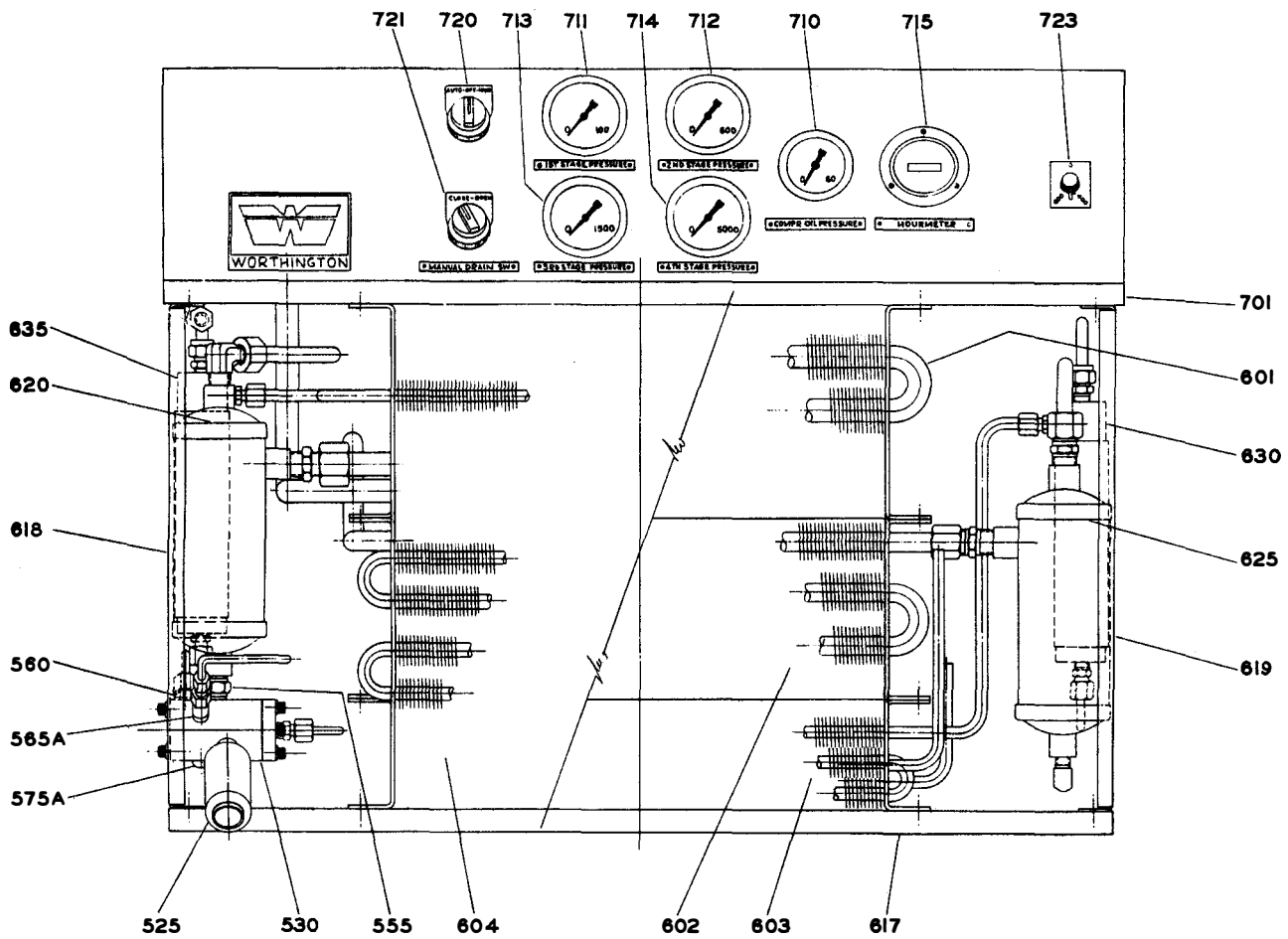


Fig. 3—Separators, Coolers, Valves and Gages

HR-17623

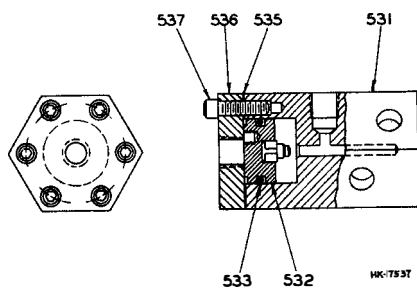


Fig. 4—Unloader Valve

HK-17537

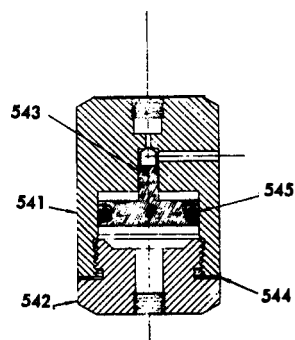


Fig. 5—Initial Unloader

HK-16330

COMPRESSOR — LIST OF PARTS

| TYPICAL SERIAL NUMBER | | | | 711-00010 | | | |
|-----------------------|---|----------|----------|--|--|----------|-----------|
| COMPRESSOR BORES | | | | 4 $\frac{1}{2}$ // 4 $\frac{3}{8}$ -3 $\frac{1}{2}$ // 1 $\frac{1}{4}$ // 1 $\frac{1}{2}$ -1 $\frac{1}{8}$ | | | |
| COMPRESSOR STROKE | | | | X 2 $\frac{1}{2}$ | | | |
| Ref. No. | Name of Part | No. Req. | Part No. | Ref. No. | Name of Part | No. Req. | Part No. |
| 540 | Unloader, Initial, Assembly (Ref. 541-545) | 1 | UL-676 | 617 | •Plate, Cooler Bottom | 1 | PLT-2762A |
| 541 | •Body, Initial Unloader | 1 | BOD-147 | 618 | •Support Assembly, L.H. | 1 | SUP-1440A |
| 542 | •Cap, Initial Unloader | 1 | CAP-191 | 619 | •Support Assembly, R.H. | 1 | SUP-1441A |
| 543 | •Piston Assembly, Initial Unloader | 1 | PST-244A | 620 | •Separator, 1st Stage | 1 | SEP-88 |
| 544 | •Gasket, Body to Cap | 1 | GKT-654 | 625 | •Separator, 2nd Stage | 1 | SEP-88 |
| 545 | •Ring, "O," Piston | 1 | RNG-1250 | 630 | •Separator, 3rd Stage | 1 | SEP-85 |
| *550 | Valve, Solenoid, 115 V | 1 | VAL-1387 | 635 | •Separator, 4th Stage | 1 | SEP-87 |
| *550 | Valve, Solenoid, 230 V | 1 | VAL-1376 | *640 | Separator, Crankcase Vent | 1 | SEP-86 |
| *551 | Valve, Drain, Manual, 1st, 2nd, 3rd Stage Hoke No. TRB-271 | 3 | VAL-1351 | *641 | Support, Crankcase Vent Separator | 1 | SUP-1467 |
| *552 | Valve, Drain, Manual, 4th Stage Hoke No. TRB-271 | 1 | VAL-1357 | *642 | Brace, L.H. Separator Support | 1 | BRC-151 |
| 555 | Valve, Check, First Stage | 1 | VAL-1370 | *643 | Brace, R.H. Separator Support | 1 | BRC-152 |
| 560 | Valve, Check, Second Stage | 1 | VAL-1355 | *650 | Support Assembly—Instrument Panel (Ref. 651-653) | 1 | SUP-1444 |
| 565A | Valve, Check, Assembly, Third Stage | 1 | VAL-1375 | *651 | •Plate Assembly— Instrument Panel Support | 1 | PLT-2761A |
| 575A | Valve, Check, Assembly, Fourth Stage | 1 | VAL-1374 | *652 | •Support Assembly, Instruction Panel Support | 1 | SUP-1442 |
| *580 | Valve, Check, Fourth Stage Discharge | 1 | VAL-1355 | *653 | •Support Assembly, Instruction Panel Support | 1 | SUP-1443 |
| *581 | Valve, Safety, First Stage | 1 | VAL-1341 | *660 | Muffler Assembly, (Ref. 661-664) | 1 | MUF-224 |
| *582 | Valve, Safety, Second Stage | 1 | VAL-1362 | *661 | •Muffler | 1 | MUF-225 |
| *583 | Valve, Safety, Third Stage | 1 | VAL-1363 | *662 | •Cover, Muffler | 1 | COV-936 |
| *584 | Valve, Safety, Fourth Stage Select one (1) only of the following 5 According to Service Pressure of Unit. | 5 | | *663 | •Filter, (Fram No. CA-120PL) | 1 | FLR-225 |
| | Valve, Safety, Set for 2200 PSI | 1 | VAL-1368 | *664 | •Gasket, Filter to Cover | 1 | GKT-2645 |
| | Valve, Safety, Set for 3300 PSI | 1 | VAL-1371 | 701 | Panel, Instrument | 1 | PNL-2877 |
| | Valve, Safety, Set for 3850 PSI | 1 | VAL-1372 | 702 | Plate, Back Cover, Instrument Panel | 1 | PLT-2764 |
| | Valve, Safety, Set for 4400 PSI | 1 | VAL-1369 | *708 | Snubber, Pressure | 3 | DAM-61 |
| | Valve, Safety, Set for 5500 PSI | 1 | VAL-1373 | 710 | Gage, Oil Pressure, Compressor | 1 | GAG-135 |
| 600 | Cooler Group (Ref. 601-635) | 1 | COO-34 | 711 | Gage, 1st Stage Pressure | 1 | GAG-136 |
| 601 | •Intercooler—1st Stage | 1 | | 712 | Gage, 2nd Stage Pressure | 1 | GAG-137 |
| 602 | •Intercooler—2nd Stage | 1 | | 713 | Gage, 3rd Stage Pressure | 1 | GAG-138 |
| 603 | •Intercooler—3rd Stage | 1 | INT-100 | 714 | Gage, 4th Stage Pressure | 1 | GAG-139 |
| 604 | •Aftercooler | 1 | AFT-49 | 715 | Gage, Hourmeter, 115 V | 1 | GAG-203 |
| *605 | •Fan Shroud | 1 | SHR-58 | 715 | Gage, Hourmeter, 230 V | 1 | GAG-190 |
| *606 | •Flange—1st Stage Discharge | 1 | | * | Gage, Suction Pressure (Optional, in place of Hourmeter) | 1 | GAG-190 |
| *607 | •Gasket | 1 | GKT-928 | 720 | Switch, Selector, Hand-Off-Auto | 1 | SWT-174 |
| *608 | •Flange—2nd Stage Discharge & Suction | 2 | | 721 | Switch, Manual Drain | 1 | SWT-167 |
| *609 | •Gasket | 2 | GKT-894 | *722 | Switch, Time Delay Relay, 115 V | 1 | SWT-55 |
| *610 | •Screw, 1/4-20 x 1/2 Lg. Steel Hex Head | 58 | SCR-1240 | *722 | Switch, Time Delay Relay, 230 V | 1 | SWT-56 |
| *611 | •Washer, Lock, 1/4" Steel | 58 | WAS-503 | 723 | Switch, High Temperature Cut-Out | 1 | SWT-171 |
| *612 | •Nut, 1/4-20 Steel | 20 | NUT-522 | *724 | Switch, Oil Failure Pressure | 1 | SWT-255 |
| *613 | •Screw, 3/8-16 NC x 1 1/2 | 4 | SCR-833 | *725 | Switch, "On-Off" | 1 | SWT-173 |
| *614 | •Washer, Lock 3/8 Cadmium Plated | 4 | WAS-544 | *726 | Switch, Pressure | 1 | SWT-178 |
| | | | | *750 | Timer, Cycling, 115 V | 1 | TMR-10 |
| | | | | *750 | Timer, Cycling, 230 V | 1 | TMR-8 |
| | | | | *800 | Base | 1 | BAS-731A |
| | | | | *810 | Guard, MVD | 1 | GRD-552 |
| | | | | *820 | Rail, Motor, 5 H.P. | 2 | RAL-110 |
| | | | | *820 | Rail, Motor, 7 1/2-10-15 H.P., 1750 RPM and 20 H.P., 3600 RPM | 2 | RAL-118 |
| | | | | * | Kit, Overhaul Repair | 1 | KIT-924 |
| | | | | * | Kit, Gasket, | 1 | KIT-802 |

*Not Illustrated

1st Stage Intercooler Assembly, INT-138 includes Ref. No. 601 and 606.
2nd Stage Intercooler Assembly, INT-139 includes Ref. No. 602 and 608.